

Gabriel by Enea

www.gabriel.dk

Medley/Gr.D by Gabriel

Medley - Product information

Medley is woven in 100% polyester melange yarn with a simple, geometric structure. The tight texture and changing structure of the yarn give the fabric an intense colour depth and a lively surface in multiple shades.

Technical information

Design no. 8613

Application

contract - soft seating

Composition

100% polyester

Weight

510 g/lm (16.5 oz/lin.yd)

Width

140 cm / 55 inches

Abrasion

75,000 rubs martindale (EN ISO 12947-2)

100,000 double rubs wyzenbeek (ASTM D4157-07) (heavy duty upholstery)

Pilling

4 scale 1-5, max. 5 - EN ISO 12945-2

Light fastness

5-7 scale 1-8, max. 8 - EN ISO 105-B02

Rubbing fastness

4-5/4-5 (wet/dry)

scale 1-5, max. 5 - EN ISO 105x12

Maintenance

wash or dry cleaning P(W)

Medley is made of polyester which is a material suited for environments with special requirements for cleaning.

60°C shrinkage max. 1%.

74°C shrinkage max. 3%.

US ACT

AATCC 16 Light fastness

AATCC 8 or 116 Wet/dry crocking

ASTM D3511 Pilling

ASTM D4157-07 Wyz abrasion (heavy-duty)

CA TB 117-2013

ASTM E 84 Class I

Acoustic test air flow resistance

EN 29053 & ISO 9053-1

Acoustic test sound absorption

ISO 354 & ISO 11654

Flammability

BS EN 1021 1&2 Cigarette and Match

BS EN 1021-1 Cigarette

BS 5852 Part 1 0,1 Cigarette & match

BS 476 Part 7, class 2

Class Uno UNI 9174 - UNI 8457

ÖNORM A3800-B2-B3825-Q1 UK

CA TB 117-2013

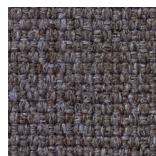
ASTM E 84 Class I

Environment

STANDARD 100 by OEKO-TEX®



60003



60004



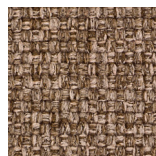
60167



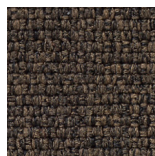
60999



61002



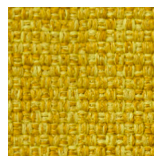
61003



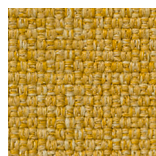
61004



61189



62002



62054



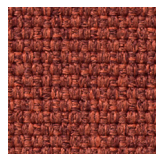
63013



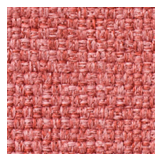
63016



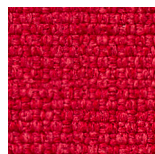
63017



63063



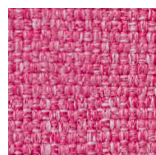
63064



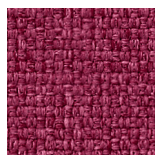
64019



64123



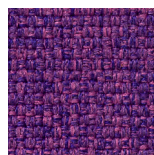
64124



64125



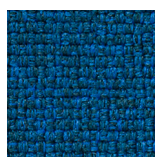
65011



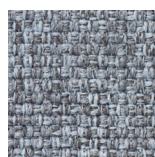
65012



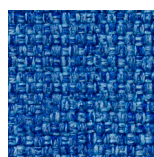
65086



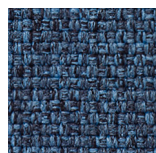
66007



66008



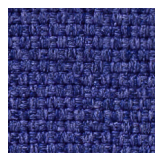
66009



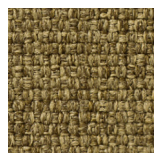
66010



66144



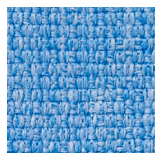
66145



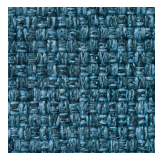
67002



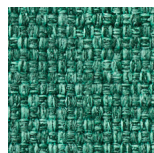
67006



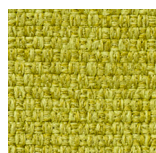
67052



67053



67054



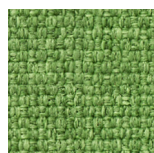
68002



68005



68114



68115

Felicity/Gr.D by Gabriel

Felicity - Product information

Felicity is a unicoloured, multifunctional fabric made from 100% recycled, post-consumer polyester. It offers great utility value and is suitable for a wide range of applications, furniture and interiors.

Technical information

Design no. 13-2477

Application
contract

Composition

100% post-consumer recycled polyester

Weight

430 g/lm (13.87 oz/lin.yd)

Width

140 cm / 55 inches

Abrasion

90,000 rubs martindale (EN ISO 12947-2)

100,000 double rubs wyzenbeek (ASTM D4157-07) (heavy duty upholstery)

Pilling

5 scale 1-5, max. 5 - EN ISO 12945-2

Light fastness

5-7 scale 1-8, max. 8 - EN ISO 105-B02

Rubbing fastness

4-5/4-5 (wet/dry)

scale 1-5, max. 5 - EN ISO 105x12

Maintenance

wash or dry cleaning P(W)

Felicity is made of polyester which is a material suited for environments with special requirements for cleaning.

40°C shrinkage max. 1,5%.

60°C shrinkage max. 2,5%.

US ACT

ASTM D4157-07 Wyz abrasion (heavy duty) 100k

ASTM D3511 Pilling

AATCC 16 Light fastness

AATCC 8 or 116 Wet/dry crocking

CA TB 117-2013

Acoustic test air flow resistance

EN 29053 & ISO 9053-1

Flammability

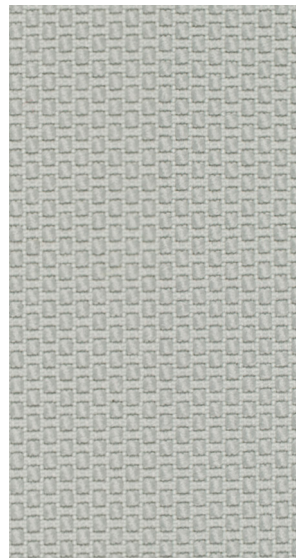
BS EN 1021 1&2 Cigarette and Match

Environment

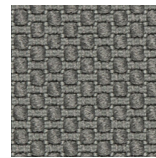
STANDARD 100 by OEKO-TEX®

EU Ecolabel

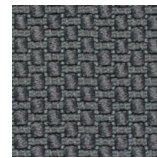
Cradle to Cradle Certified™ Bronze



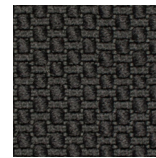
60105



60106



60107



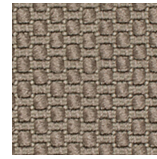
60108



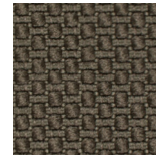
60999



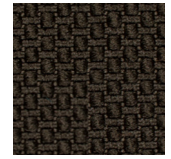
61163



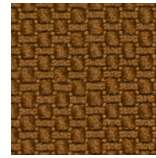
61164



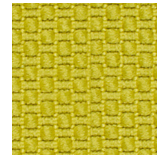
61165



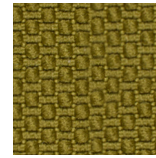
61166



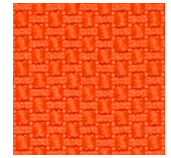
61167



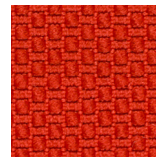
62080



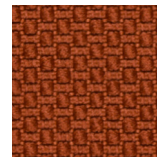
62081



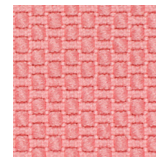
63087



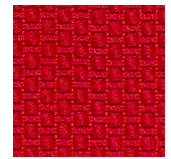
63088



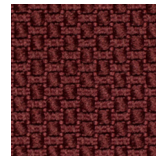
63089



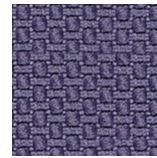
64189



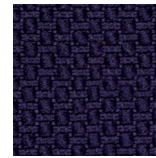
64190



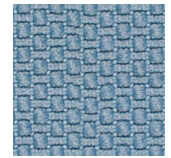
64191



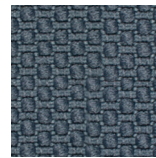
65102



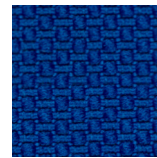
65103



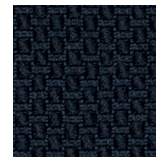
66161



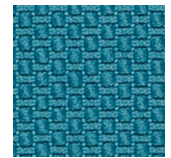
66162



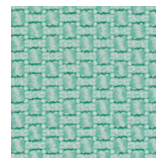
66163



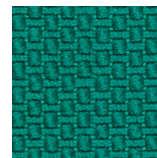
66164



67079



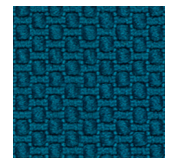
67080



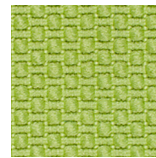
67081



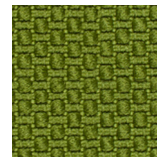
67082



67083



68178



68179

Atlantic/Gr.E by Gabriel

Atlantic - Product information

Atlantic is designed with a straight-forward, light structure and a discreet relief effect, which adds play and depth to both surface and colour. It is a strong base fabric with visual values ranging from quiet to fresh and sporty looks.

Technical information

Design no. 8690

Application
contract

Composition
100% polyester

Weight
530 g/lm (17.09 oz/lin.yd)
Width
150 cm / 59 inches

Abrasion
100,000 rubs martindale (EN ISO 12947-2)
100,000 double rubs wyzenbeek (ASTM D4157-07) (heavy duty upholstery)

Pilling
4-5 scale 1-5, max. 5 - EN ISO 12945-2
Light fastness
5-7 scale 1-8, max. 8 - EN ISO 105-B02
Rubbing fastness
4-5/4-5 (wet/dry)
scale 1-5, max. 5 - EN ISO 105x12

Maintenance
wash or dry cleaning P(W)
Atlantic is made of polyester which is a material suited for environments with special requirements for cleaning.
60°C shrinkage max 3%.

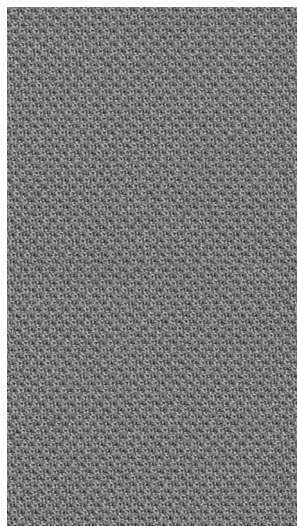
US ACT
AATCC 16 Light fastness
ASTM D3511 Pilling
ASTM D4157-07 Wyz abrasion (heavy duty)
CA TB 117-2013
ASTM E 84 Class I
AATCC 8 or 116 Wet/dry crocking

Acoustic test air flow resistance
EN 29053 & ISO 9053-1

Flammability
CA TB 117-2013
ASTM E 84 Class I
ÖNORM A3800-B1-B3825-Q1 UK
BS EN 1021-1 Cigarette
BS EN 1021-2 Match

Flammability with flameretardant treatment Certificates
FAR/JAR 25.853 (a) (i) (ii) (flame retardant)

Environment
STANDARD 100 by OEKO-TEX®
EU Ecolabel



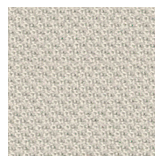
60011



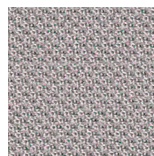
60025



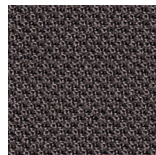
60061



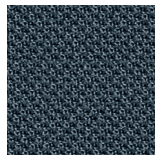
60063



60141



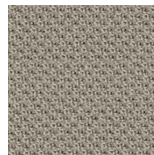
60142



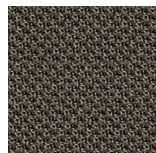
60143



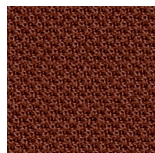
60999



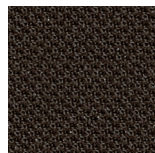
61078



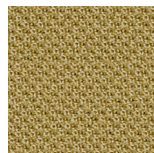
61163



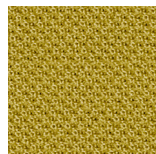
61164



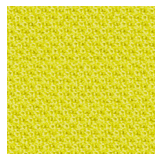
61165



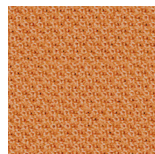
61166



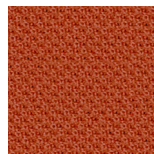
62048



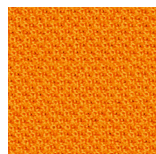
62049



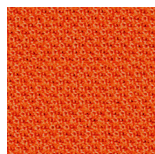
63033



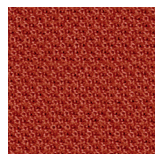
63034



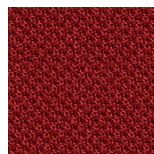
63055



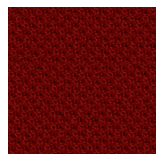
63056



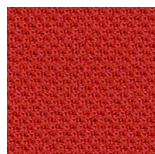
63057



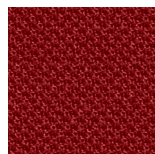
64089



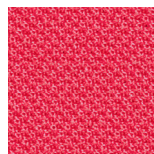
64092



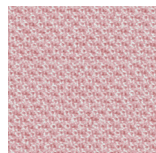
64093



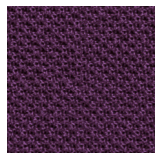
64105



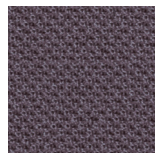
64116



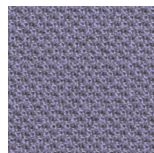
64117



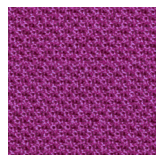
65037



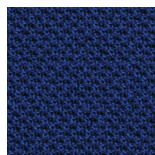
65073



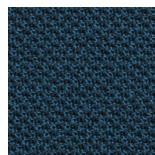
65074



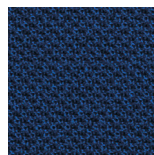
65075



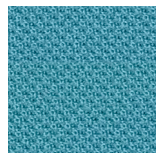
66041



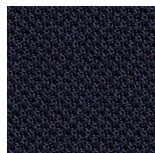
66057



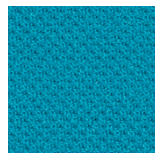
66062



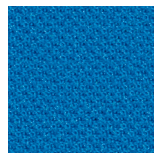
66063



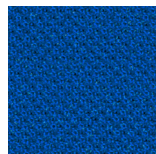
66064



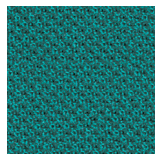
66086



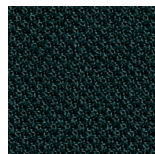
66125



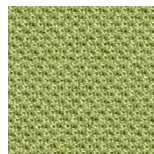
66126



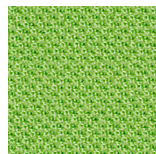
67030



67043



68054



68099

Chili/Gr.E by Gabriel

Chili - Product information

Chili is made from post- consumer recycled flame retardant polyester. The fabric offers superior flame retardancy and is designed for use in environments, where fire safety is an absolute top priority.

Technical information

Design no. 2488

Application
contract

Composition

75% post-consumer recycled polyester fr / 25% polyester fr (fr inside the fiber)

Weight

470 g/lm (15.16 oz./lin.yd)

Width

140 cm / 55 inches

Abrasion

60,000 rubs martindale (EN ISO 12947-2)

100,000 double rubs wyzenbeek (ASTM D4157-07) (heavy duty upholstery)

Pilling

4-5 scale 1-5, max. 5 - EN ISO 12945-2

Light fastness

5-8 scale 1-8, max. 8 - EN ISO 105-B02

Rubbing fastness

4-5/4-5 (wet/dry)

scale 1-5, max. 5 - EN ISO 105x12

Maintenance

wash or dry cleaning P(W)

Chili is made of polyester which is a material suited for environments with special requirements for cleaning. click here for guidance relating to disinfection.

60°C shrinkage max. 3%.

US ACT

AATCC 16 Light fastness

AATCC 8 or 116 Wet/dry crocking

ASTM D4157-07 Wyz abrasion (heavy-duty)

CA TB 117-2013

ASTM E 84 Class I

Acoustic test air flow resistance

EN 29053 & ISO 9053-1

Flammability

CA TB 117-2013

NFP 92-503/504/505 M1

DIN 4102 - B1

Class Uno UNI 9175 Class I | EMME

BS EN 1021 1&2 Cigarette and Match

BS EN 1021-1 Cigarette

BS 7176 Medium hazard

BS 5852 Crib 5

BS 5852 Part 1 0,1 Cigarette & match

AM 18 - NF D 60-013-(only for fabric)

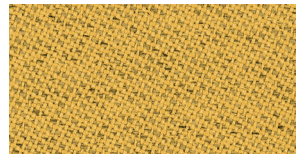
DIN EN 13501-1 B-s1,d0

Environment

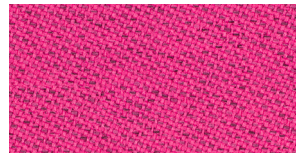
STANDARD 100 by OEKO-TEX®



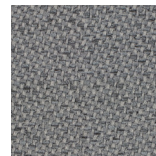
60081



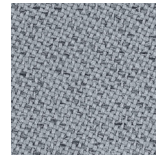
62086



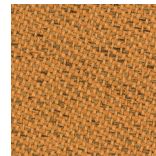
64197



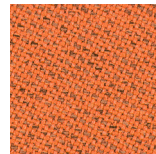
60083



60117



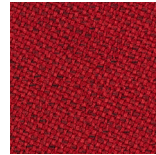
61173



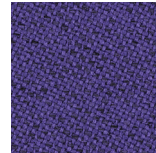
63090



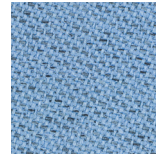
64198



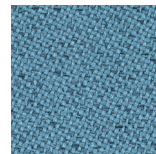
64202



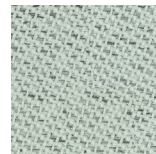
65109



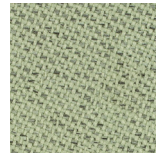
66172



66176



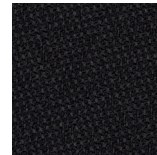
68191



68195



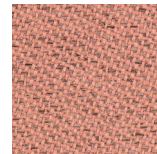
60114



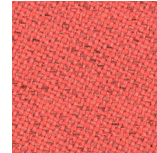
60999



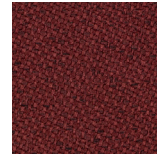
61174



63092



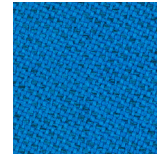
64199



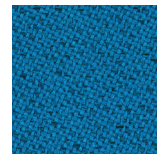
64203



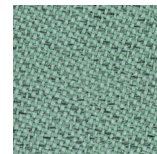
65110



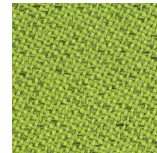
66173



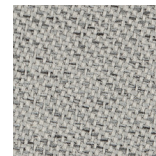
67085



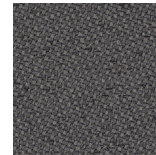
68192



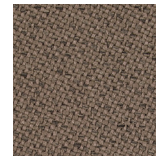
68196



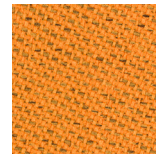
60115



61171



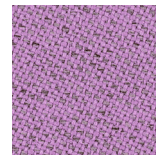
61175



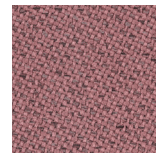
63093



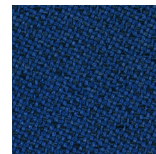
64200



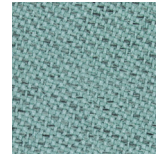
65107



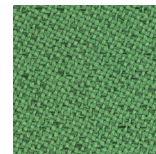
65111



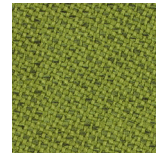
66174



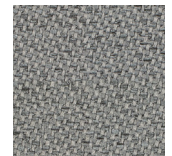
68189



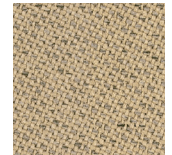
68193



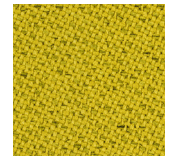
68197



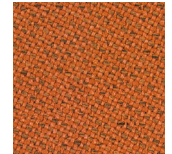
60116



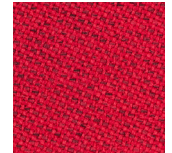
61172



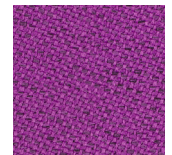
62085



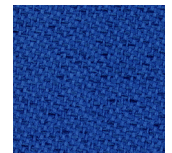
63099



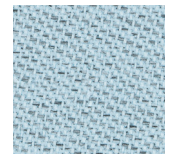
64201



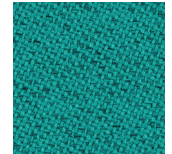
65108



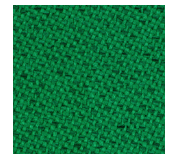
66171



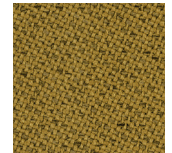
66175



68190



68194



68198

Cura/Gr.F by Gabriel

Cura - Product information

Cura is a multi-purpose, two- coloured upholstery fabric made from 98% post-consumer recycled polyester. Use Cura for office furniture or lounge seating to transform workplaces into homey interiors.

Technical information

Design no. 2480

Application

contract - soft seating

Composition

98% post-consumer recycled polyester / 2% polyester

Weight

420 g/lm (13,55 oz/lin.yd)

Width

140 cm / 55 inches

Abrasion

100,000 rubs martindale (EN ISO 12947-2)

100,000 double rubs wyzenbeek (ASTM D4157-07) (heavy duty upholstery)

Pilling

4-5 scale 1-5, max. 5 - EN ISO 12945-2

Light fastness

5-8 scale 1-8, max. 8 - EN ISO 105-B02

Rubbing fastness

4-5/4-5 (wet/dry)

scale 1-5, max. 5 - EN ISO 105x12

Maintenance

wash or dry cleaning P(W)

Cura is made of polyester which is a material suited for environments with special requirements for cleaning.

40°C shrinkage max. 1%.

60°C shrinkage max. 2%.

US ACT

ASTM D4157-07 Wyz abrasion (heavy-duty)

ASTM D3511 Pilling

CA TB 117-2013

AATCC 16 Light fastness

AATCC 8 or 116 Wet/dry crocking

Acoustic test air flow resistance

EN 29053 & ISO 9053-1

Flammability

BS EN 1021 1&2 Cigarette and Match

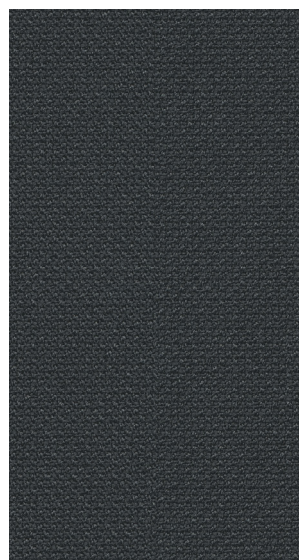
BS 5852 Part 1 0,1 Cigarette & match

CA TB 117-2013

Environment

STANDARD 100 by OEKO-TEX®

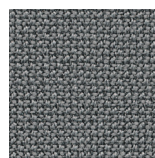
EU Ecolabel



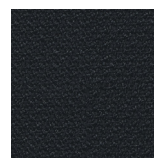
60009



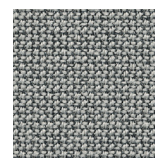
60109



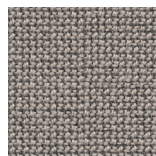
60110



60111



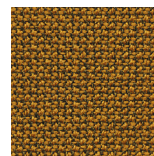
60112



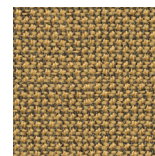
61168



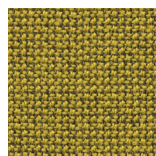
61169



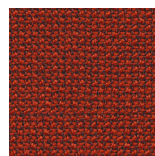
62082



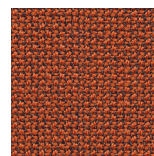
62083



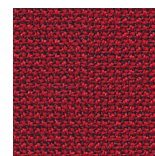
62084



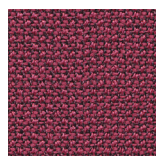
63012



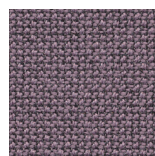
63078



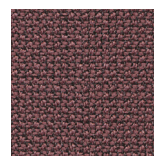
64013



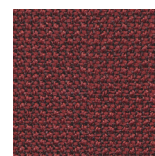
64193



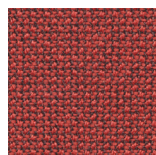
64194



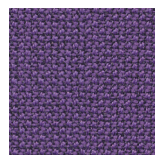
64195



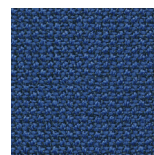
64196



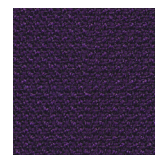
64197



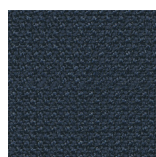
65104



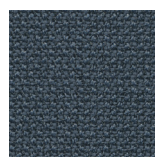
65105



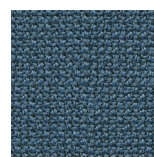
65106



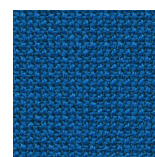
66165



66166



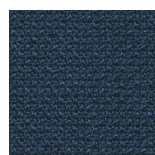
66167



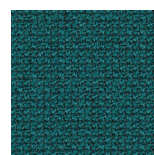
66168



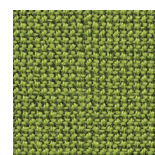
66169



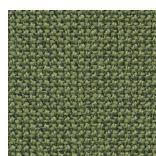
66170



67084



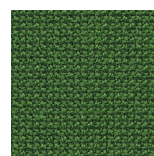
68180



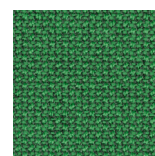
68181



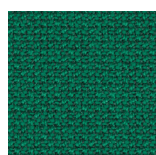
68182



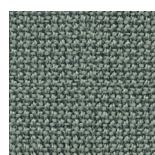
68183



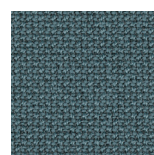
68184



68185



68186



68187

Step/Gr.F by Gabriel

Step - Product information

Step is unique in both texture and performance. With its delicate surface, Step is perceived as vivid and interesting.

Technical information

Design no. 2440

Application contract

Composition

100% Trevira cs

Weight

470 g/lm (15,16 oz/lin.yd)

Width

140 cm / 55 inches

Abrasion

100,000 rubs martindale (EN ISO 12947-2)

100,000 double rubs wyzenbeek (ASTM D4157-07) (heavy duty upholstery)

Pilling

4-5 scale 1-5, max. 5 - EN ISO 12945-2

Light fastness

5-7 scale 1-8, max. 8 - EN ISO 105-B02

Rubbing fastness

4-5/4-5 (wet/dry)

scale 1-5, max. 5 - EN ISO 105x12

Maintenance

wash or dry cleaning P(W)
Step is made of Trevira CS which is a polyester material suited for environments with special requirements for cleaning.

can be wiped with Virkon S, Actichlor Plus, Prime Source ren-93 or Ethanol (70-85%).

60°C shrinkage max. 3%.

74° shrinkage max. 5%.

US ACT

AATCC 16 Light fastness

ASTM D3511 Pilling

ASTM D4157-07 Wyz abrasion (heavy-duty)

CA TB 117-2013

AATCC 8 or 116 Wet/dry crocking

Acoustic test air flow resistance

EN 29053 & ISO 9053-1

Acoustic test sound absorption

ISO 354 & ISO 11654

Flammability

IMO MSC 307(88) Annex 1 part 8

MED Certificate IMO - DIN 4102 - B1

NFP 92-503/504/505 M1

BS EN 1021 1&2 Cigarette and Match

BS EN 1021-1 Cigarette

BS 5852 Part 1 0,1 Cigarette & match

BS 5852 Crib 5

Class Uno UNI 9174 - UNI 8457

ÖNORM A3800-B2-B3825-Q1 UK

FAR/JAR 25.853 (a) (i) (ii)

BS 7176 Medium hazard

AM 18 - NF D 60-013-(only for fabric)

CA TB 117-2013

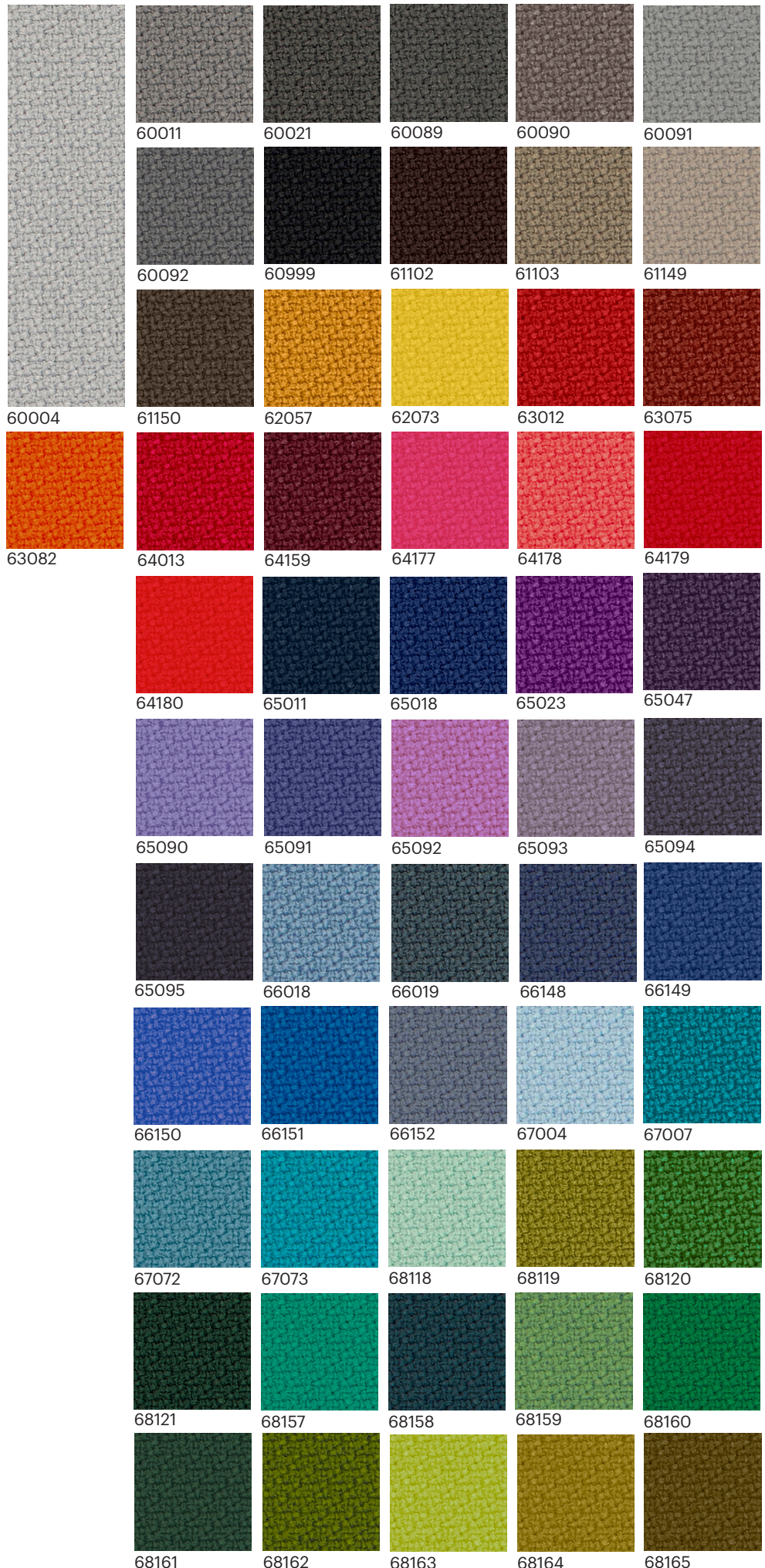
Class Uno UNI 9175 Class 1 I EMME

Environment

STANDARD 100 by OEKO-TEX®

EU Ecolabel

enea
www.eneadesign.com



Step M./Gr.F by Gabriel

Step M. - Product information

There's something quite sensuous about Step Melange which, with its two nuances, makes the eyes explore and the hands wander over the voluminous fabric.

Technical information

Design no. 2441/2442

Application contract

Composition

100% Trevira cs

Weight

470 g/lm (15.16 oz/lin.yd)

Width

140 cm / 55 inches

Abrasion

100,000 rubs martindale (EN ISO 12947-2)

100,000 double rubs wyzenbeek (ASTM D4157-07) (heavy duty upholstery)

Pilling

4-5 scale 1-5, max. 5 - EN ISO 12945-2

Light fastness

5-7 scale 1-8, max. 8 - EN ISO 105-B02

Rubbing fastness

4-5/4-5 (wet/dry)

scale 1-5, max. 5 - EN ISO 105x12

Maintenance

wash or dry cleaning P(W)

Step Melange is made of Trevira CS which is a polyester material suited for environments with special requirements for cleaning.

can be wiped with Virkon S, Actichlor Plus, Prime Source ren-93 or Ethanol (70-85%).

60°C shrinkage max. 3%.

74° shrinkage max. 5%.

US ACT

AATCC 16 Light fastness

AATCC 8 or 116 Wet/dry crocking

ASTM D3511 Pilling

ASTM D4157-07 Wyz abrasion (heavy-duty)

CA TB 117-2013

ASTM E 84 Class I

Flammability

IMO MSC 307(88) Annex 1 part 8

MED Certificate IMO - DIN 4102 - B1

NFP 92-503/504/505 M1

BS EN 1021 1&2 Cigarette and Match

BS EN 1021-1 Cigarette

BS 5852 Part 1 0,1 Cigarette & match

BS 5852 Crib 5

ÖNORM A3800-B2-B3825-Q1 UK

FAR/JAR 25.853 (a) (ii)

BS 7176 Medium hazard

AM 18 - NF D 60-013-(only for fabric)

CA TB 117-2013

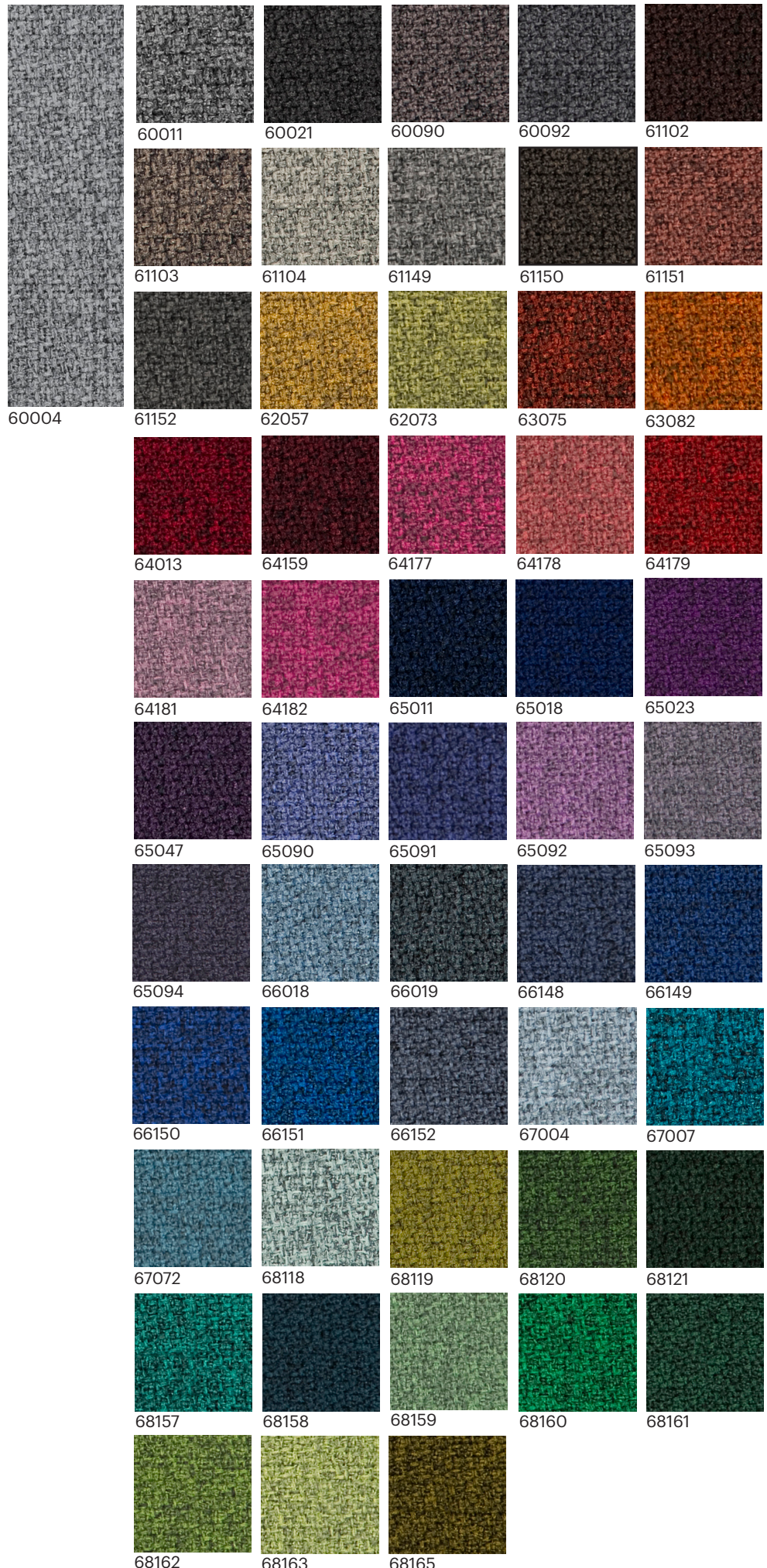
Class Uno UNI 9175 Class I EMME

DIN EN 13501-1 B-s1,d0

Environment

STANDARD 100 by OEKO-TEX®

EU Ecolabel



Europost/Gr.G by Gabriel

Europost - Product information

Europost has a popular felted character which gives the upholstered surface a uniform, simple and clean expression. The wool's sheen and quality give the individual colours life and depth.

Technical information

Design no. 1701

Application
contract

Composition

100% New Zealand wool

Weight

800 g/lm (25.80 oz/lin.yd)

Width

140 cm / 55 inches

Abrasion

50,000 rubs martindale (EN ISO 12947-2)

Pilling

4 scale 1-5, max. 5 - EN ISO 12945-2

Light fastness

5-7 scale 1-8, max. 8 - EN ISO 105-B02

Rubbing fastness

4-5/4-5 (wet/dry)

scale 1-5, max. 5 - EN ISO 105x12

Maintenance

dry cleaning P(S)

US ACT

AATCC 16 Light fastness

CA TB 117-2013

ASTM E 84 Class II

NFPA 286 Room corner fire test

AATCC 8 or 116 Wet/dry crocking

Acoustic test air flow resistance

EN 29053 & ISO 9053-1

Acoustic test sound absorption

ISO 354 & ISO 11654

Flammability

BS EN 1021 1&2 Cigarette and Match

ÖNORM A3800-B2-B3825-Q1 UK

Class Uno UNI 9175 Class I EMME

BS EN 1021 1&2 Cigarette and Match

IMO MSC 307(88) Annex 1 part 8

MED Certificate IMO

CA TB 117-2013

ASTM E 84 Class II

NFPA 286 Room corner fire test

DIN 4102 - B2

BS 476 Part 7, class 1

Flammability with

flameretardant treatment

NF P 92-503 M2 (flame retardant)

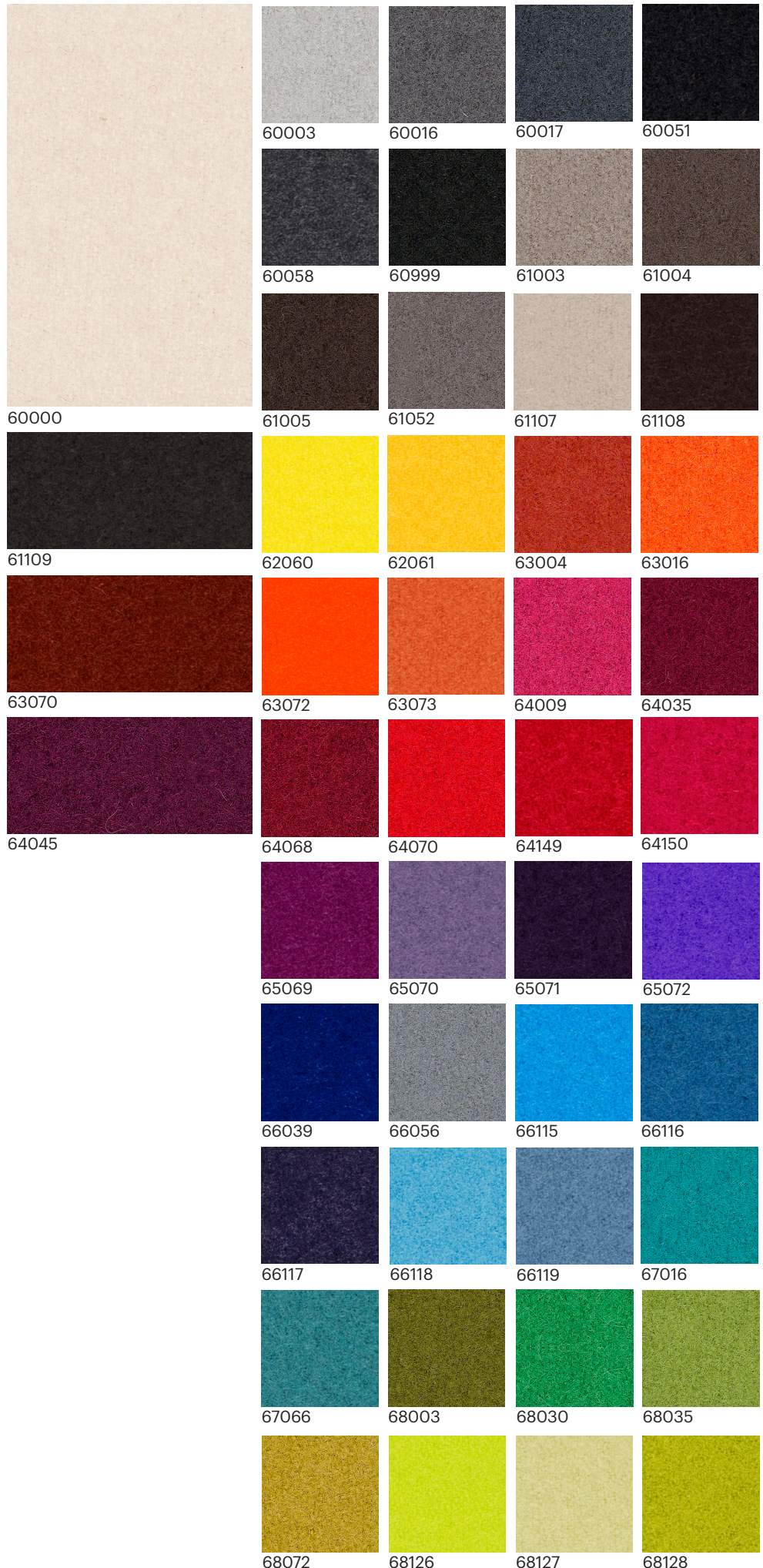
BS 5852 Crib 5 (flame retardant)

BS 5852 Crib 5 (flame retardant)

Environment

STANDARD 100 by OEKO-TEX®

EU Ecolabel



Fame/Gr.G by Gabriel

Fame - Product information

Fame is a unique woollen upholstery fabric with a wearability of 200,000 Martindale, and at the same time is extra soft and stretchable. The colour scale is very elegant and vibrant.

Technical information

Design no. 2409

Application contract

Composition

95% New Zealand wool / 5% polyamide

Weight

630 g/lm (20.32 oz/lin.yd)

Width

140 cm / 55 inches

Abrasion

200,000 rubs martindale (EN ISO 12947-2)

140,000 double rubs wyzenbeek (ASTM D4157-07) (heavy duty upholstery)

Pilling

4 scale 1-5, max. 5 - EN ISO 12945-2

Light fastness

5-7 scale 1-8, max. 8 - EN ISO 105-B02

Rubbing fastness

4-5/4-5 (wet/dry)

scale 1-5, max. 5 - EN ISO 105x12

Maintenance

dry cleaning P(S)

US ACT

AATCC 16 Light fastness

AATCC 8 or 116 Wet/dry crocking

ASTM D3511 Pilling

ASTM D4157-07 Wyz abrasion (heavy-duty)

CA TB 117-2013

ASTM E 84 Class I

Acoustic test air flow resistance

EN 29053 & ISO 9053-1

Acoustic test sound absorption

ISO 354 & ISO 11654

Flammability

BS EN 1021-1 Cigarette

BS EN 1021-2 Match

BS 5852 Crib 5

CA TB 117-2013

Class Uno UNI 9175 Class I | EMME

AM 18 - NF D 60-013-(only for fabric)

BS 5852 Part 1 0,1 Cigarette & match

ÖNORM A3800-B1-B3825-Q1 UK

IMO MSC 307(88) Annex 1 part 8

MED Certificate IMO

BS 476 Part 7, class 1

Flammability with flameretardant treatment

DIN 4102 - B1

NF P 92-503 M2

BS 7176 Medium hazard

Environment

STANDARD 100 by OEKO-TEX®

EU Ecolabel



Crisp/Gr.H by Gabriel

Crisp - Product information

Crisp is a tightly woven wool fabric distinguished by its vibrant surface in multiple shades. With its excellent stretch properties, Crisp offers complete freedom of design and is suitable for upholstery of even complex shapes and forms.

Technical information

Design no. 2424

Application

contract - soft seating

Composition

93% New Zealand wool / 7% polyamide

Weight

460 g/lm (14.84 oz/lin.yd)

Width

140 cm / 55 inches

Abrasion

200,000 rubs martindale (EN ISO 12947-2)

200,000 double rubs wyzenbeek (ASTM D4157-07) (heavy duty upholstery)

Pilling

4-5 scale 1-5, max. 5 - EN ISO 12945-2

Light fastness

5-7 scale 1-8, max. 8 - EN ISO 105-B02

Rubbing fastness

4-5/4-5 (wet/dry)

scale 1-5, max. 5 - EN ISO 105x12

Maintenance

dry cleaning P(S)

US ACT

AATCC 16 Light fastness

ASTM D4970 Pilling

ASTM D4966 Martindale (heavy duty)

CA TB 117-2013

AATCC 8 or 116 Wet/dry crocking

Flammability

BS 5852 Part 1 0,1 Cigarette & match

BS 476 Part 7, class 2

BS EN 1021 1&2 Cigarette and Match

Class Uno UNI 9175 Class 1 | EMME

CA TB 117-2013

IMO MSC 307(88) Annex 1 part 8

MED Certificate IMO

ÖNORM A3800-B2-B3825-Q1 UK

Acoustic test air flow resistance

EN 29053 & ISO 9053-1

Acoustic test sound absorption

ISO 354 & ISO 11654

Flammability with flameretardant treatment

BS 5852 Crib 5

BS 7176 Medium hazard

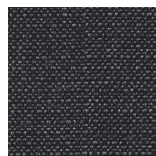
Environment

STANDARD 100 by OEKO-TEX®

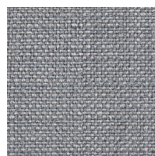
EU Ecolabel



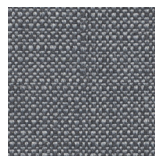
4011



4013



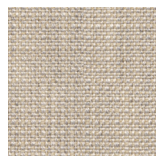
4021



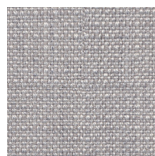
4022



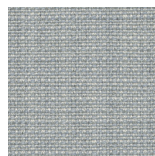
4031



4032



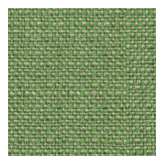
4033



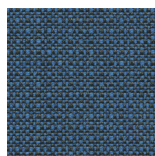
4034



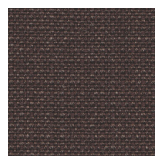
4115



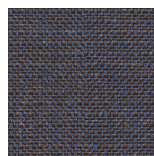
4117



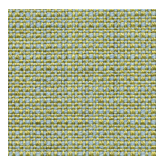
4122



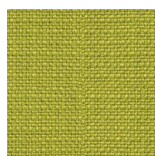
4123



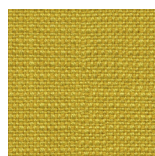
4125



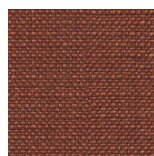
4201



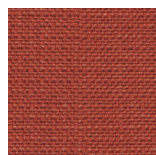
4203



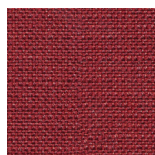
4211



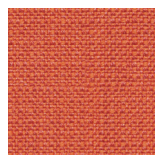
4301



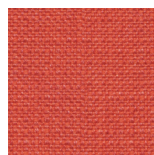
4302



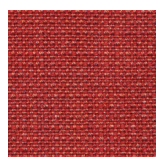
4411



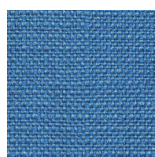
4430



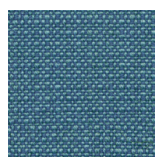
4431



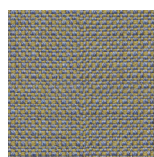
4432



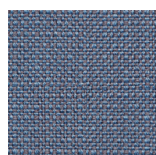
4601



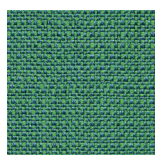
4602



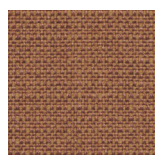
4603



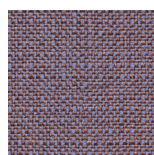
4604



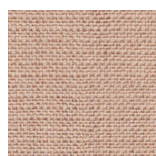
4605



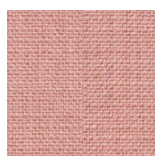
4701



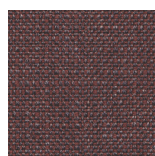
4702



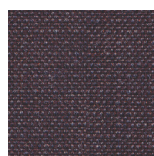
4711



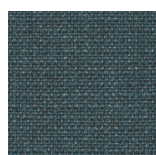
4712



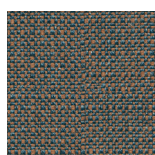
4721



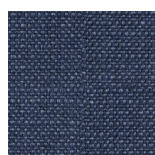
4722



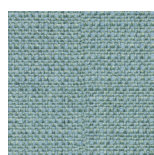
4723



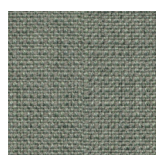
4731



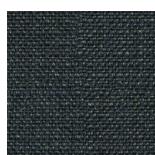
4741



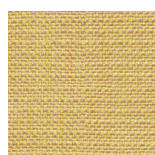
4751



4752



4761



4771

www.eneadesign.com