

Fabrics by Enea

www.eneadesign.com
www.exitfabrics.com
www.tuvatextil.com

enea

www.eneadesign.com

in collaboration with

www.exitfabrics.com

www.tuvatextil.com

Paris/Gr.C by Enea Fabric

Paris - Product information

Technical information

Composition Surface/Backing
100% Polyester

Roll Width
140 cm (+/-3%)

Roll Length (average)
40/60m

Weight
520g/lm (+/-5%)

Tensile Strength
Warp 528N/31,6% EN ISO 13934-1
Weft 504N/14,2% EN ISO 13934-1

Tear Growth Resistance
Warp 42N EN ISO 13937-3
Weft 66,5N EN ISO 13937-3

Seam Slippage Resistance
Warp 2mm EN ISO 13936-2
Weft 2mm EN ISO 13936-2

Abrasion Test
>100.000 EN ISO 12947-1,2

Pilling
5 EN ISO 12945-2

Colour Fastness to Rubbing
5 DRY EN ISO 105-X12
5 WET EN ISO 105-X12

Colour Fastness to Artificial Light
5 EN ISO 105-B02

Applications & Features

Breathable

Fire Proof Norms
BS 5852 Part 1 - Cigarette Test - PASS
EN 1021-1 - Cigarette Test - PASS
CA Tech. Bull.117 / NFPA - Cigarette Test - PASS

Environment
REACH Compliant
Confidence Textiles according to
OEKO-TEX Standard 100

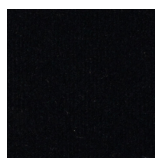
Clean & Care recommendations
Frequent wash may affect the performance of the product.
To remove dust use a vacuum cleaner.
Any stain, spills or soiling should be cleaned up promptly with a neutral soap solution using a cloth in smooth circular movements.
Do not accept responsibility for any damage resulting from inappropriate use, chemical cleaning or additional impregnation.



EPO01



EPO04



EPO05



EPO07



EPO08



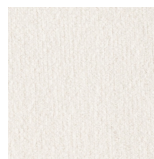
EPO09



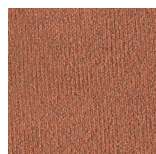
EPO10



EPO11



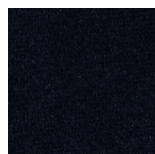
EPO12



EPO13



EPO14



EPO16



EPO17



EPO18



EPO19



EPO21



EPO22



EPO23



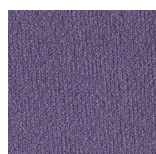
EPO24



EPO25



EPO26



EPO27



EPO28



EPO29



EPO31



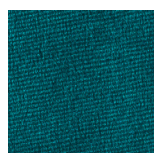
EPO32



EPO33



EPO34



EPO35



EPO36



EPO37



EPO39



EPO40



EPO41



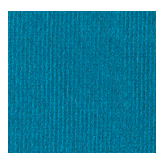
EPO45



EPO46



EPO47



EPO52



EPO53



EPO56

Babel/Gr.C by Enea Fabric

Babel - Product information

Technical information

Composition Surface/Backing

100% Polyester

Roll Width

142 cm (+/-3%)

Roll Length (average)

40/45m

Weight

440g/lm (+/-5%)

Tensile Strength

Warp 1311N/33% EN ISO 13934-1

Weft 755N/27,4% EN ISO 13934-1

Tear Growth Resistance

Warp 162,4N EN ISO 13937-3

Weft 129,8N EN ISO 13937-3

Seam Slippage Resistance

Warp 3,5mm EN ISO 13936-2

Weft 4mm EN ISO 13936-2

Abrasion Test

90.000 EN ISO 12947-1,2

Pilling

3-4 EN ISO 12945-2

Colour Fastness to Rubbing

5 DRY EN ISO 105-X12

4-5 WET EN ISO 105-X12

Colour Fastness to Artificial Light

4 EN ISO 105-B02

Applications & Features

Breathable

Fire Proof Norms

BS 5852 Part 1 - Cigarette Test - PASS

EN 1021-1 - Cigarette Test - PASS

CA Tech. Bull.117 / NFPA - Cigarette Test

- PASS

Environment

REACH Compliant

Confidence Textiles according to

OEKO-TEX Standard 100

Clean & Care recommendations

Easy to Clean:

Promptly remove any excess liquid or residue with a clean cloth.

Use a wet cloth with 5% neutral soap, press gently and rub in circular movements.

Recommend using a 100% cotton cloth and a brush if necessary.

Frequent wash may affect the performance of the treatment Easy to Clean.

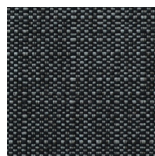
The analytical results are referred only to the sample tested.



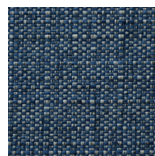
EB002



EB004



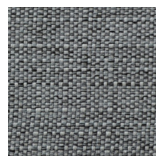
EB005



EB006



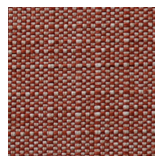
EB011



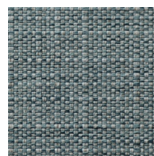
EB026



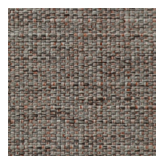
EB032



EB038



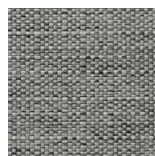
EB040



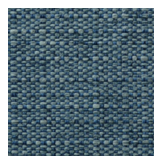
EB041



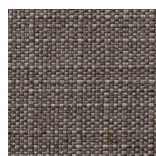
EB042



EB043



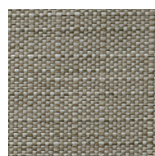
EB044



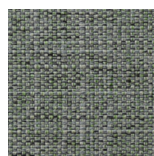
EB046



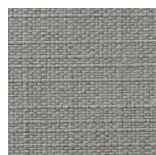
EB048



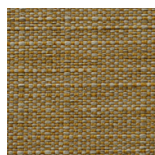
EB049



EB054



EB055



EB057

Seattle/Gr.C by Enea Fabric

Seattle - Product information

Technical information

Composition Surface/Backing

100% Polyester

Roll Width

142 cm (+/-2%)

Roll Length (average)

40/45m

Weight

653g/lm (+/-5%)

Tensile Strength

Warp 2041N/48,7% EN ISO 13934-1

Weft 1057N/49,5% EN ISO 13934-1

Tear Growth Resistance

Warp 356,5N EN ISO 13937-3

Weft 297N EN ISO 13937-3

Seam Slippage Resistance

Warp 1,8mm EN ISO 13936-2

Weft 2mm EN ISO 13936-2

Abrasion Test

90.000 EN ISO 12947-1,2

Pilling

4 EN ISO 12945-2

Colour Fastness to Rubbing

5 DRY EN ISO 105-X12

4 WET EN ISO 105-X12

Colour Fastness to Artificial Light

5 EN ISO 105-B02

Applications & Features

Breathable

Fire Proof Norms

BS 5852 Part 1 - Cigarette Test - PASS

EN 1021-1 - Cigarette Test - PASS

CA Tech. Bull.117 / NFPA - Cigarette Test - PASS

Environment

REACH Compliant

Confidence Textiles according to

OEKO-TEX Standard 100

Clean & Care recommendations

Easy to Clean:

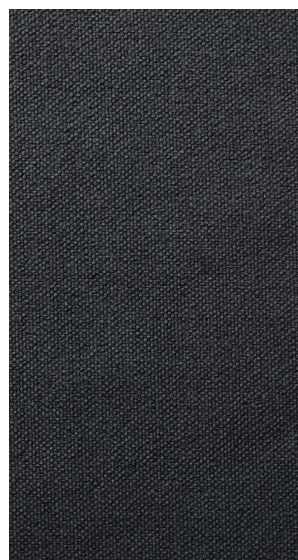
Promptly remove any excess liquid or residue with a clean cloth.

Use a wet cloth with 5% neutral soap, press gently and rub in circular movements.

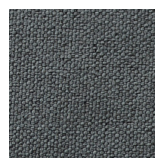
Recommend using a 100% cotton cloth and a brush if necessary.

Frequent wash may affect the performance of the treatment Easy to Clean.

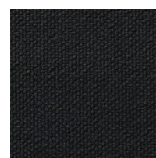
The analytical results are referred only to the sample tested.



ES001



ES002



ES005



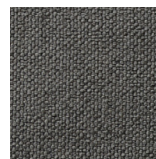
ES009



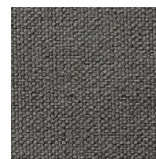
ES011



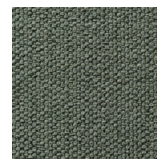
ES012



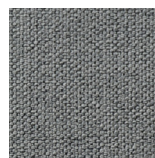
ES019



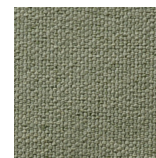
ES020



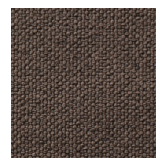
ES022



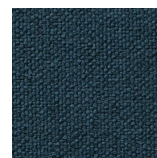
ES026



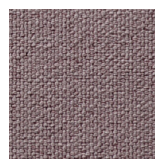
ES028



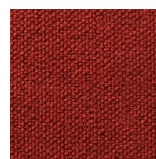
ES030



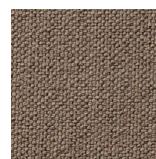
ES034



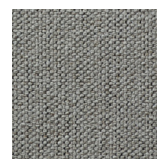
ES036



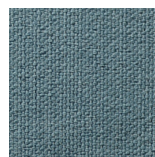
ES038



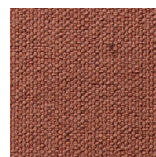
ES041



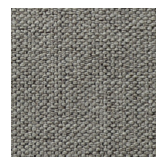
ES042



ES044



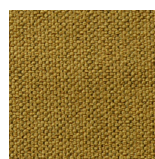
ES047



ES050



ES051



ES057

Plus F.R./Gr.C by Exitfabrics

Plus F.R. - Product information

With excellent fire resistance properties, Plus F.R. passes all the fireproof regulations required in the contract or office sectors (including SBI certification for construction products). A fabric with modern crepe binding made in polyester F.R. With a large colour range (up to 40 colours to choose from), it is a timeless classic from Exit Fabrics.

Technical information

Application

Leisure Contract Office Home

Composition

100% Polyester F.R.

Roll Width

140 cm (+/-2%)

Roll Length

45m (+/-10%)

Weight

455g/lm (+/-5%) / 325g/m2 (+/-5%)

Abrasion resistance

100.000 Martindale EN ISO 12947-2

Pilling

4-5EN ISO 12945-2 (1-5)

Colour Fastness to Light

5-6 EN ISO 105-B02 method 2 (1-8)

Colour Fastness to Rubbing

4 DRY EN ISO 105-X12

4 WET EN ISO 105-X12

Tear Resistance

Warp 81N EN ISO 13937-3

Weft 66N EN ISO 13937-3

Acoustic absorption

EN ISO 10534-2: 0.9

Flammability

BS 5852 O/1

BS 5852 CRIB 5

BS 7176 Medium Hazard

CAL TB 117 Sección 1

EN 1021 1/2

EN 13501-1 B-s1, d0

FAR 25.853 a) Apéndice F Part I (a) (1) (ii)

IMO MSC.307 (88) Anexo I Parte 8

NF D 60-013 AM 18

NF P92-507 M1

NFPA 260 Clase 1

Reglamento nº 118 de UNECE Anexo 6

UNE 23 727-90 1R Clase M.1

UNI 9175 Clase 1. IM

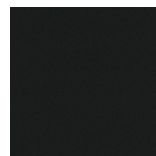
Maintenance

Vacuum regularly. In case of stains, use a damp cloth with neutral soap suitable for cleaning of upholstery products.

PLA004



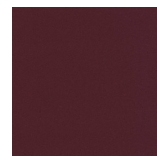
PLA005



PLA009



PLA021



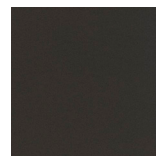
PLA030



PLA035



PLA045



PLA046



PLA069



PLA072



PLA074



PLA076



PLA077



PLA079



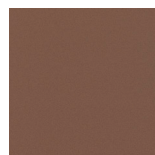
PLA081



PLA082



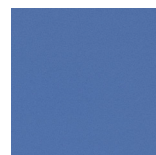
PLA084



PLA091



PLA094



PLA097



PLA100



PLA101



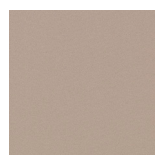
PLA102



PLA105



PLA106



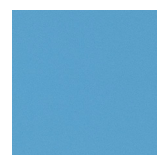
PLA108



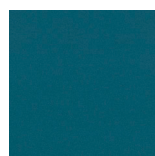
PLA141



PLA156



PLA157



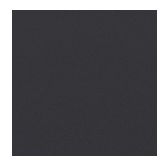
PLA160



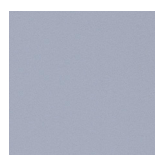
PLA161



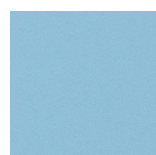
PLA168



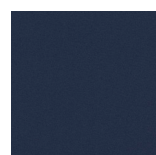
PLA172



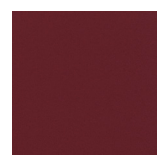
PLA173



PLA174



PLF024



PLF136



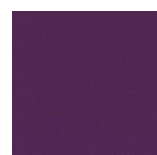
PLF151



PLF158



PLF201



PLF292

Londres F.R./Gr.C by Exitfabrics

Londres F.R. - Product information

Open-weave fabric with flat binding.
Fire-resistant as standard (polyester F.R.), its woollen touch makes it appropriate for surfaces of all kinds, whether horizontal or vertical.

Technical information

Application

Contract Office Home Leisure

Composition

100% Polyester F.R.

Roll Width

140 cm (+/-2%)

Roll Length

45m (+/-10%)

Weight

402g/lm (+/-5%) / 287g/m2 (+/-5%)

Abrasion resistance

100.000 Martindale EN ISO 12947-2

Pilling

4 EN ISO 12945-2 (1-5)

Colour Fastness to Light

4-5 EN ISO 105-B02 method 2 (1-8)

Colour Fastness to Rubbing

4-5 DRY EN ISO 105-X12

4-5 WET EN ISO 105-X12

Tear Resistance

Warp 39N EN ISO 13937-3

Weft 37N EN ISO 13937-3

Acoustic absorption

EN ISO 10534-2: 0.9

Flammability

BS 5852 0/1

BS 5852 CRIB 5

BS 7176 Medium Hazard

CAL TB 117 Section 1

EN 1021 1/2

FAR 25.853 a) Appendix F Part I (a) (1) (ii)

IMO MSC.307 (88) Annex I Parte 8

NF D 60-013 AM 18

NF P92-507 M1

NFPA 260 Class 1

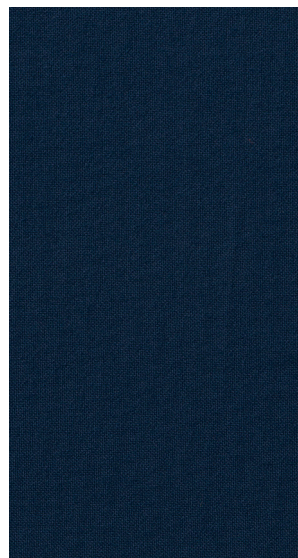
Regulation n° 118 de UNECE Annex 6

UNE 23 727-90 1R Class M.1

UNI 9175 1. IM

Maintenance

Vacuum regularly. In case of stains, use a damp cloth with neutral soap suitable for cleaning of upholstery products.



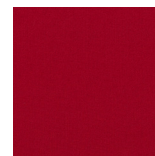
LN210



LN252



LN297



LN300



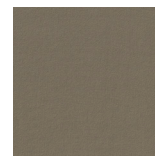
LN310



LN327



LN376



LN412



LN520



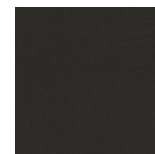
LN559



LN575



LN616



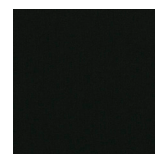
LN668



LN704



LN705



LN800

Stretch Plain F.R. /Gr.E by Exitfabrics

Stretch Plain F.R. - Product information

Stretch plain is a fire-resistant fabric with flat binding, and high performance with 140,000 Martindale cycles. It has multi-directional stretch properties allowing for excellent and comfortable upholstery. As well as offering an extensive and balanced palette of colours, it gives the option of customisation with a range of bespoke colours. And if that weren't enough, there is the possibility of combining its plain colour with the Vigoré finish of Stretch F.R. This collection has passed the SBI standard for construction products.

Technical information

Application

Leisure Contract Office Home

Composition

100% Polyester F.R.

Roll Width 140 cm (+/-2%)

Roll Length 40m (+/-10%)

Weight

530g/lm (+/-5%) / 380g/m2 (+/-5%)

Abrasion resistance

140.000 Martindale EN ISO 12947-2

Pilling

4-5 EN ISO 12945-2 (1-5)

Colour Fastness to Light

6 EN ISO 105-B02 method 2 (1-8)

Colour Fastness to Rubbing

4-5 DRY EN ISO 105-X12

4-5 WET EN ISO 105-X12

Tear Resistance

Warp 130N EN ISO 13937-3

Weft 120N EN ISO 13937-3

Acoustic absorption

EN ISO 10534-2: 0.9

Flammability

BS 5852 0/1

BS 5852 CRIB 5

BS 7176 Medium Hazard

CAL TB 117 Section 1

EN 1021 1/2

EN 13501-1 B-s1 d0

EN 13773 Class 1

FAR 25.853 a) Appendix F Part I (a) (1) (ii)

IMO MSC.307 (88) Annex I Parte 8

NF D 60-013 AM 18

NF P92-507 M1

NFPA 260 Class 1

Regulation n° 118 de UNECE Annex 6

UNE 23 727-90 1R Class M.1

UNI 9175 1. IM

Maintenance

Vacuum regularly. In case of stains, use a damp cloth with neutral soap suitable for cleaning of upholstery products.



Agora Waterproof by Tuvatextil

Agora - Product information

High-end fabrics for decoration and upholstery that offer the best performance.

Tuvatextil has focused a major part of its research in recent years in the field of decorative fabrics, applying the latest advances in textile materials, methods and technologies.

Agora uses a 100% solution-dyed acrylic fibre throughout its range. Fabrics are manufactured to withstand the harshest conditions of the outdoors, incorporating a variety of qualities and treatments to cope with the most demanding environments and guaranteeing excellent performance. Agora is the IN & OUT solution.

Technical information

Application

Indoor/Outdoor/Nautic/Sunshades/Drapes/Cushions/Deskchairs/Frames

Composition

100% Solution Dyed Acrylic

Roll Width

160 cm

Roll Length

50ml

Weight

260gr/m²

Finish

Water repellent with stain resistant treatment

Light Fastness

7/8

Warranty

5 years

Tolerance

Sensitive values of tolerance of + / - 5%

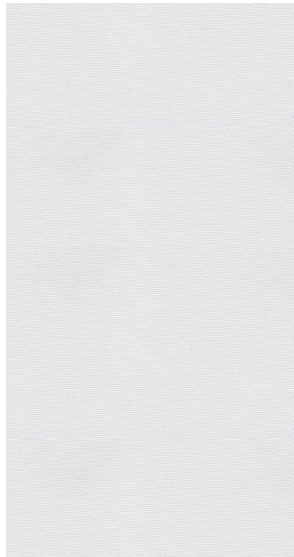
Different optional fabric treatment:

WATERPROOF

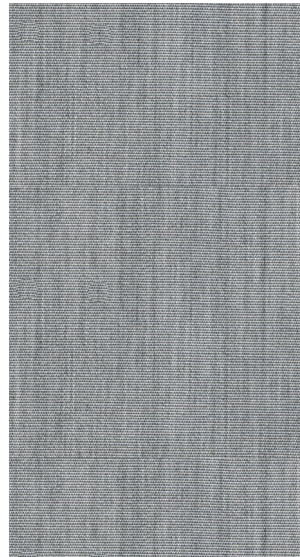
FLAME RETARDANT

UNE 1021 PARTS 1-2 - IMO PEF 2010

Anex 1. Part 8 - BS 5852 Cigarette & Match



3701 Blanco



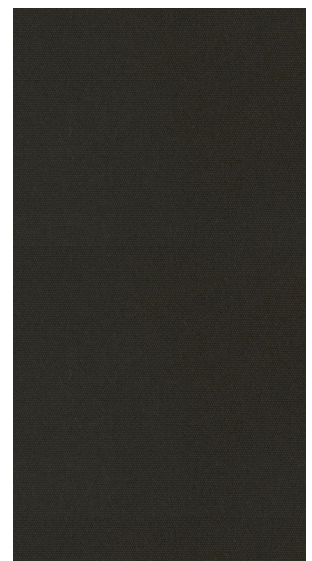
3825 Piedra



3736 Brisa



3731 Antracita



3713 Café

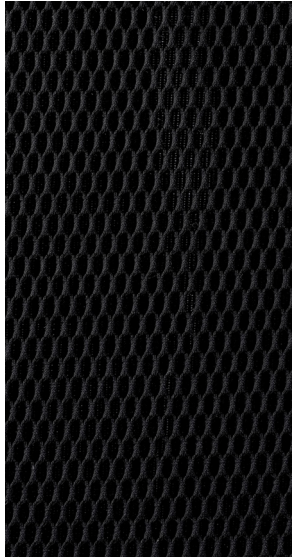
Double Mesh by Enea

Mesh - Product information

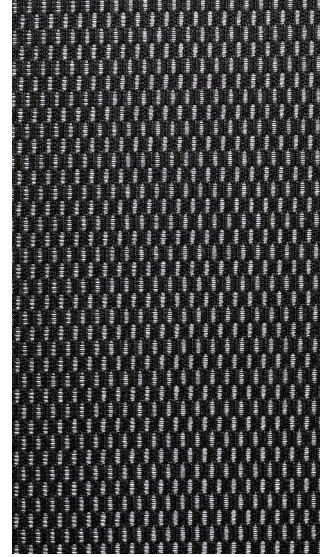
Double technical Mesh for Office and Contract.

The Mesh is very elastic and flexible for the confort for long term working requirements.

Available only for Back of the office chair.



Black



Grey

Technical specifications: www.eneadesign.com

Please be aware that the PDF colour shades can appear different from the real fabric colours. We advise you to request actual fabric samples before ordering.

www.eneadesign.com