

Camira by Enea

www.camirafabrics.com

camira

www.camirafabrics.com

Era/Gr.C by Camira

Era - Product information



Era is a subtle, two tone polyester fabric containing stretch in both directions for ease of upholstery. The baby herringbone weave offers an understated contemporary texture while its colouring technique provides close up intrigue. The palette incorporates playful brights and sophisticated muted tones.

Technical information

Industry Application
Workplace, Education

Composition
100% Polyester

Environment
Certified to OEKO-TEX® Standard 100
Certified to Indoor Advantage™ Gold

Width
140 cm minimum

Weight
320 g/m² ±5% (448 g/lin.m ±5%)

Abrasion Resistance*
Heavy duty / 10 year guarantee.
Independently certified to ≥100,000
Martindale cycles

Flammability
EN 1021 - 1 (cigarette)
EN 1021 - 2 (match) BS 7176 Low Hazard
EN 13501-1 Adhered Class B, s1, d0 EN
13501-1 Un-adhered Class C, s1, d0

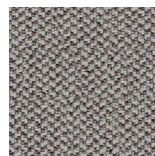
Light Fastness
5 (ISO 105 - B02)

Fastness to Rubbing
Wet: 4, Dry: 4 (ISO 105 - X12)

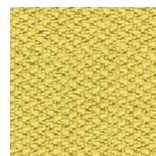
Cleaning
Washable to 60°C. Vacuum regularly.
Wipe clean with a damp cloth or
shampoo using proprietary upholstery
shampoo.



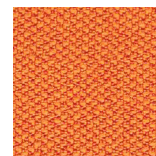
CSE01



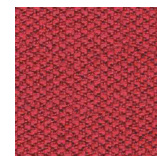
CSE02



CSE03



CSE05



CSE06



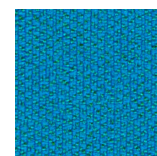
CSE07



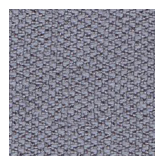
CSE08



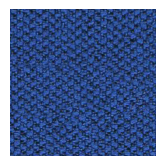
CSE09



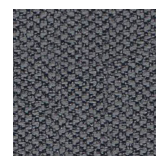
CSE10



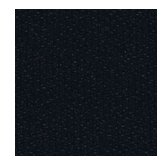
CSE11



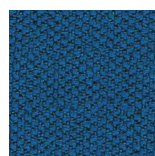
CSE12



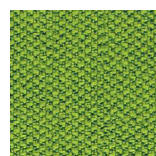
CSE13



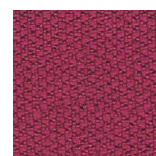
CSE14



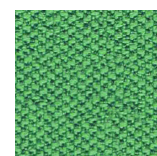
CSE15



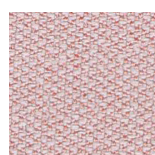
CSE16



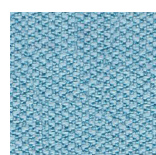
CSE17



CSE18



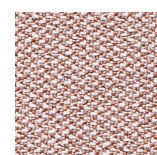
CSE19



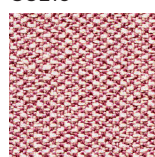
CSE20



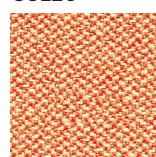
CSE21



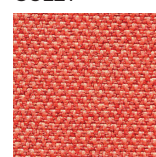
CSE23



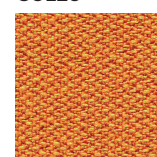
CSE24



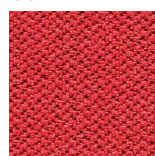
CSE25



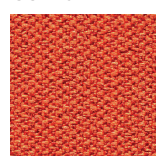
CSE26



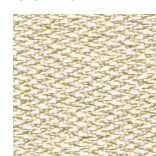
CSE27



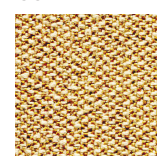
CSE28



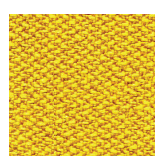
CSE29



CSE30



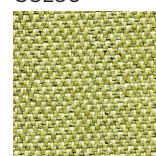
CSE31



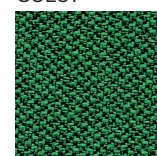
CSE32



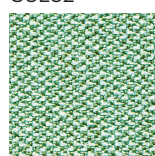
CSE33



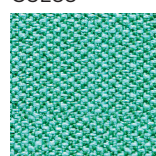
CSE34



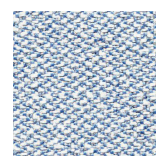
CSE35



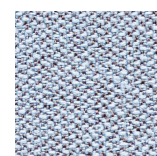
CSE36



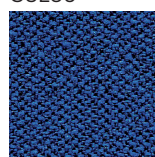
CSE37



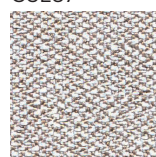
CSE38



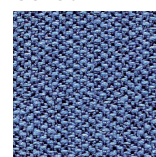
CSE39



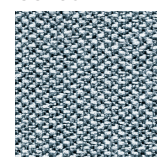
CSE40



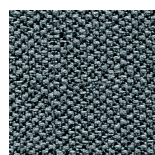
CSE41



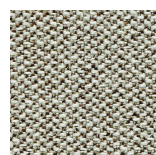
CSE42



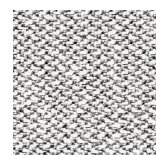
CSE43



CSE44



CSE45



CSE46

Urban/Gr.D by Camira

Urban - Product information



Urban takes its inspiration from the street. It has a sharply styled architectural look with clean lines forming a structured geometric grid pattern reminiscent of a downtown urban cityscape. Lightly textured, there's an almost industrial metallic sheen to the freshly themed colourways which work with both Xtreme and Lucia.

Technical information

Industry Application

Workplace, Education, Hospitality & Leisure
When TriOnyx™ treated: Healthcare

Composition

100% Recycled Flame Retardant Polyester
Non metallic dyestuffs

Environment

Certified to the EU Ecolabel
Certified to OEKO-TEX® Standard 100
Made from 100% recycled polyester

Width

140 cm minimum

Weight

340 g/m² ±5% (476 g/lin.m ±5%)

Abrasion Resistance*

Heavy duty / 10 year guarantee
Independently certified to ≥100,000
Martindale cycles

Flammability

EN 1021 - 1 (cigarette)
EN 1021 - 2 (match) BS 7176 Low Hazard
BS 5852 Ignition Source 5 BS 7176
Medium Hazard
DIN 4102 B1
NF D 60-013
ÖNORM A 3800-1
(over CMHR 58kg/m³ foam)
UNI 9175 Classe 1 IM

Light Fastness

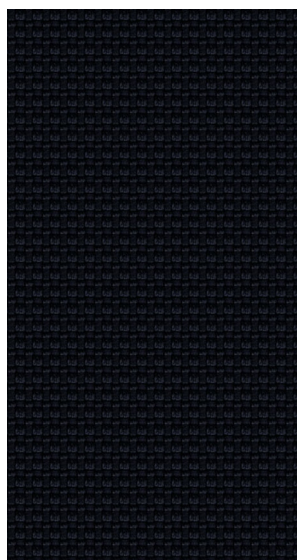
6 (ISO 105 - B02)

Fastness to Rubbing

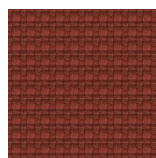
Wet: 4, Dry: 4 (ISO 105 - X12)

Cleaning

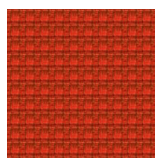
Washable to 60°C. Vacuum regularly.
Wipe clean with a damp cloth or
shampoo using proprietary upholstery
shampoo.



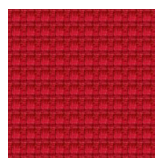
YN009



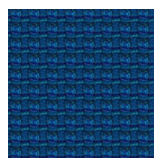
YN027



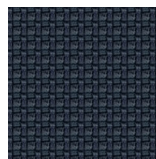
YN076



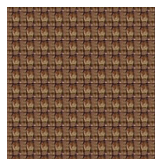
YN079



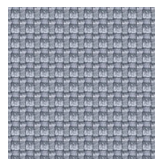
YN082



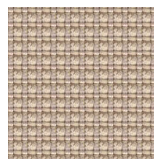
YN083



YN091



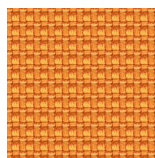
YN094



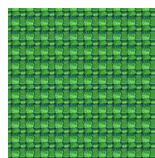
YN108



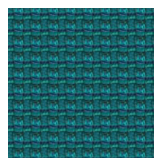
YN145



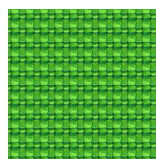
YN148



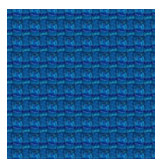
YN159



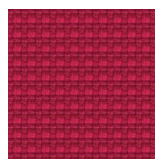
YN160



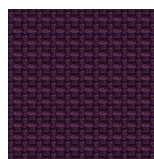
YN200



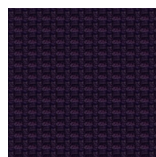
YN202



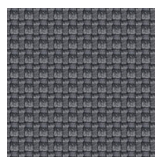
YN203



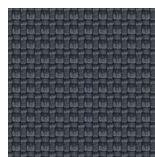
YN204



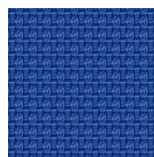
YN205



YN206



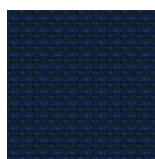
YN207



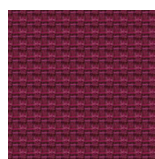
YN208



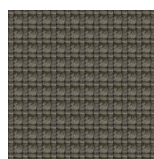
YN209



YN210



YN211



YN212

Advantage/Gr.D by Camira

Advantage - Product information



Low Hazard commercial seating fabric, Advantage, offers a combination of enduring aesthetic appeal and high performance durability which means it will look good and last for years. Advantage is a plain weave fabric in a rich assortment of colourways in both plains and mixes.

Technical information

Industry Application

Workplace, Education

Composition

60% Polypropylene, 30% Wool,
10% Viscose

Width

130 cm minimum

Weight

385 g/m² ±5% (501 g/lin.m ±5%)

Abrasion Resistance*

Heavy duty/10 year guarantee
Independently certified to ≥60,000
Martindale cycles

Flammability

EN 1021 - 1 (cigarette)
EN 1021 - 2 (match) BS 7176 Low Hazard

Light Fastness

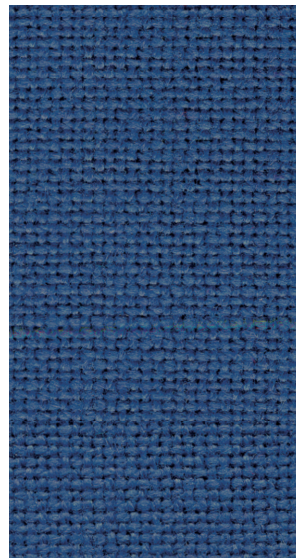
5 (ISO 105 - B02)

Fastness to Rubbing

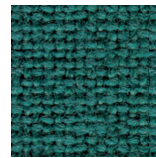
Wet: 4, Dry: 4 (ISO 105 - X12)

Cleaning

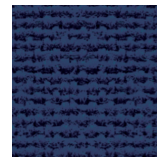
Vacuum regularly.
Wipe clean with a damp cloth or
shampoo using proprietary upholstery
shampoo.



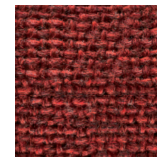
AD001



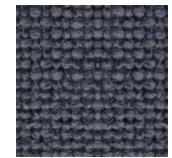
AD002



AD004



AD005



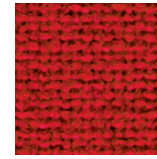
AD009



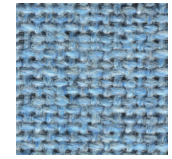
AD010



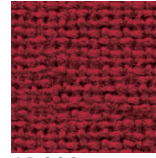
AD011



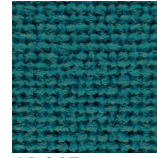
AD014



AD017



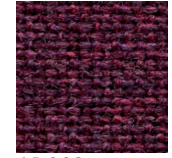
AD020



AD027



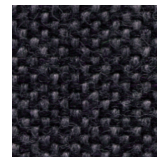
AD028



AD029



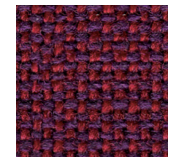
AD055



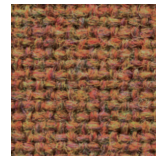
AD066



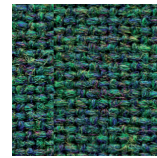
AD072



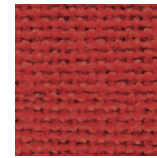
AD093



AD098



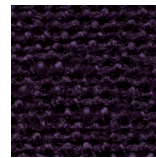
AD101



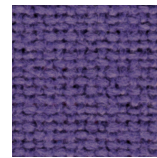
AD111



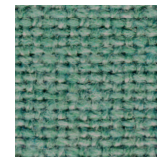
AD113



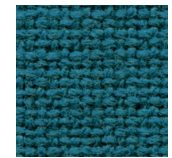
AD116



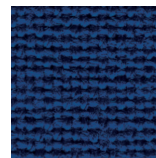
AD118



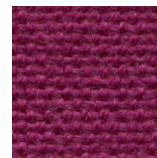
AD122



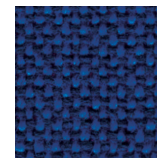
AD124



AD126



AD127



AD213

X2/Gr.D by Camira

X2 - Product information



X2 provides stretch, flammability and abrasion performance in an unobtrusive background grey mélange effect. The subtle dark tones create texture and dimension within a playful colour palette of brights through to subtle neutrals. The mottled appearance is also a practical solution to aid appearance retention. X2 was our first 100% recycled fabric to include closed loop content. 25% of the raw material is derived from our own waste streams, specifically polyester selvages and yarn remnants.

Technical information

Industry Application

Workplace, Education, Hospitality & Leisure

Composition

100% Recycled FR Polyester
Non metallic dyestuffs

Environment

Certified to the EU Ecolabel
Certified to OEKO-TEX® Standard 100
Certified to Indoor Advantage™ Gold
Made from 100% recycled polyester

Width

140 cm minimum

Weight

310 g/m2 ±5% (434 g/lin.m ±5%)

Abrasion Resistance*

Heavy duty / 10 year guarantee
Independently certified to ≥100,000
Martindale cycles

Flammability

EN 1021 - 1&2 (cigarette & match)
BS 7176 Low Hazard
BS 5852 Ignition Source 5
BS 7176 Medium Hazard
DIN 4102 B1
NF D 60-013
ÖNORM B 3825 & A 3800-1
(58 kg/m3 CMHR Foam)
UNI 9175 Classe 1 IM

Light Fastness

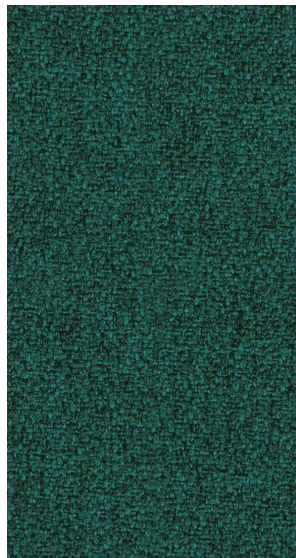
6 (ISO 105 - B02)

Fastness to Rubbing

Wet: 4, Dry: 4 (ISO 105 - X12)

Cleaning

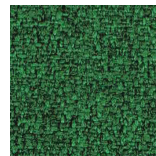
Washable to 60°C. Vacuum regularly.
Wipe clean with a damp cloth or
shampoo using proprietary upholstery
shampoo.



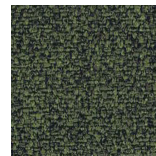
AK001



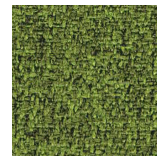
AK002



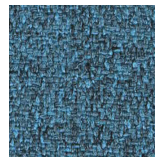
AK003



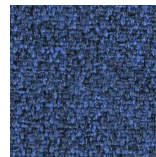
AK004



AK005



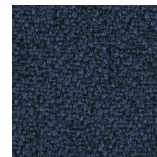
AK006



AK007



AK008



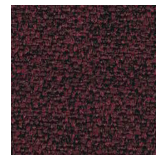
AK009



AK010



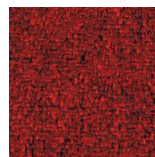
AK011



AK012



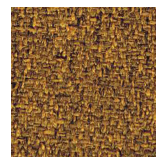
AK013



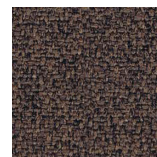
AK014



AK015



AK016



AK017



AK018



AK019



AK020

Main Line F./Gr.E by Camira

Main Line Flax - Product information



Main Line Flax is the natural progression of our all-time favourite Main Line Plus fabric, building on our industry-leading bast fibre expertise to create a new inherently flame retardant fabric from sustainable sources. A symbol of purity, wild flax has been used in textiles for thousands of years thanks to its strong, long and smooth fibres found inside the stem of the plant. The fibre is spun into a 70-30 wool flax blend, then fibre-dyed to create beautiful mixture yarns which are woven into interesting solids and cross-colours inspired by the rich tones of rare jewels.

Technical information

Industry Application

Workplace, Education, Hospitality & Leisure

Composition

70% Virgin Wool, 30% Flax

Environment

Certified to the EU Ecolabel Certified to Indoor Advantage™ Gold
Rapidly renewable and compostable
Made from wool and bast fibre

Width

140 cm minimum

Weight

437 g/m2 ±5% (612 g/lin.m ±5%)

Abrasion Resistance*

Heavy duty / 10 year guarantee
Independently certified to ≥ 50,000
Martindale cycles

Flammability

EN 1021 - 1 (cigarette)
EN 1021 - 2 (match) BS 7176 Low Hazard
BS 5852 Ignition Source 5 BS 7176 Medium Hazard NF D 60-013
ÖNORM B 3825 & A 3800-1 (58kg/m3 CMHR Foam)
UNI 9175 Classe 1 IM

Light Fastness

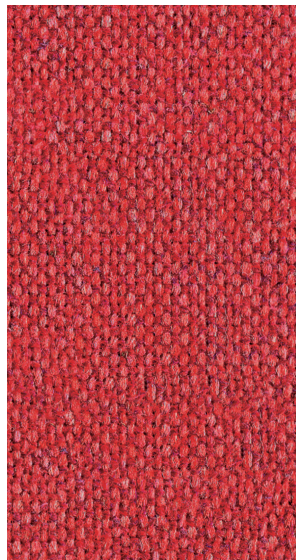
5 (ISO 105 - B02)

Fastness to Rubbing

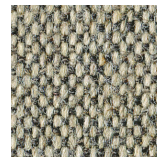
Wet: 3, Dry: 4 (ISO 105 - X12)

Cleaning

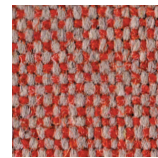
Vacuum regularly.
Professionally dry clean or wipe clean with a damp cloth



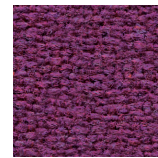
MLF01



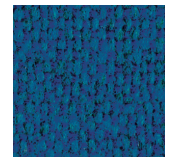
MLF02



MLF03



MLF04



MLF05



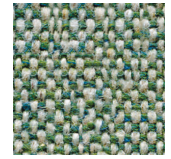
MLF06



MLF07



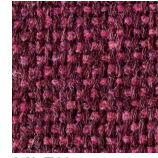
MLF08



MLF09



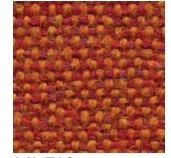
MLF10



MLF11



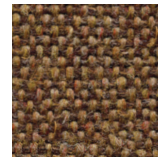
MLF12



MLF13



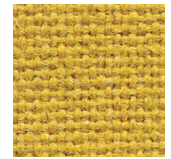
MLF14



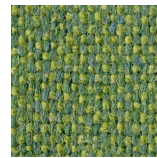
MLF15



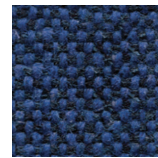
MLF16



MLF017



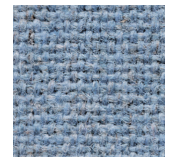
MLF18



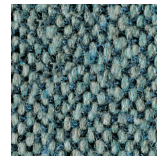
MLF19



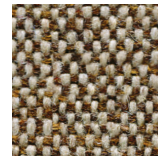
MLF20



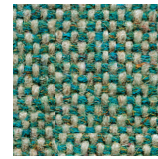
MLF21



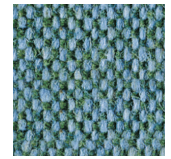
MLF22



MLF23



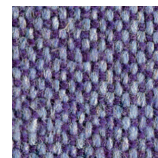
MLF24



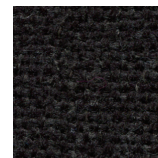
MLF25



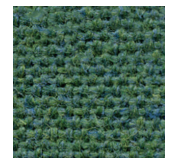
MLF26



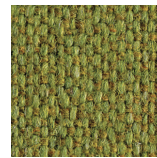
MLF27



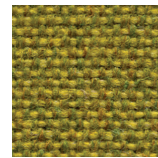
MLF28



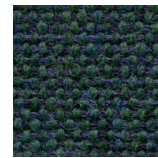
MLF29



MLF30



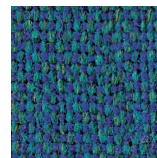
MLF31



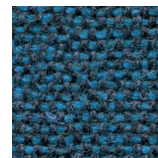
MLF32



MLF33



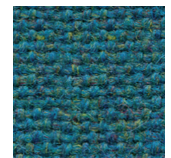
MLF34



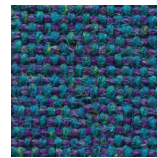
MLF35



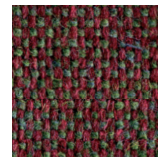
MLF36



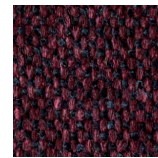
MLF37



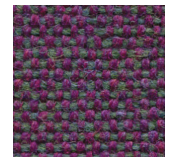
MLF38



MLF39



MLF40



MLF41

Blazer/Gr.F by Camira

Blazer - Part I



Product information

Blazer is a classic pure new wool upholstery fabric with a billiard cloth felted finish. It is made from premium New Zealand lambswool, where responsible farming provides the highest quality raw material which is soft, clean and bright, which is ideal for spinning, weaving and dyeing. The colour palette is an exciting mix of solids and mélanges across the full colour spectrum, creating a versatile fabric suitable for wide-ranging furniture applications.

Technical information

Industry Application

Workplace, Education
When FR treated: Hospitality & Lesiure

Composition

100% Virgin Wool
Non metallic dyestuffs

Environment

Rapidly renewable and compostable

Width

140 cm minimum

Weight

460 g/m² ±5% (644 g/lin.m ±5%)

Abrasion Resistance*

Heavy duty / 10 year guarantee
Independently certified to ≥ 50,000
Martindale cycles

Flammability

EN 1021 - 1 (cigarette)
EN 1021 - 2 (match)
BS 7176 Low Hazard NF D 60-013
ÖNORM B 3825 & A 3800-1
(58kg/m³ CMHR Foam)
UNI 9175 Classe 1 IM

BS 476 Part 7 Class 1 (Adhered)
EN 13501-1 Adhered Class D, s1, d0

Optional: Please specify when ordering (when FR treated):

BS 5852 Ignition Source 5 BS 7176 Medium Hazard
BS 476 Part 6 Class O
EN 13501-1 Adhered Class B, s1, d0
EN 13501-1 Un-adhered Class D, s2, d0
BS 5867-2: Type B Curtains & Drapes

Light Fastness

5 (ISO 105 - B02)

Fastness to Rubbing

Wet: 4, Dry: 4 (ISO 105 - X12)

Cleaning

Vacuum regularly. Professionally dry clean or wipe clean with a damp cloth.



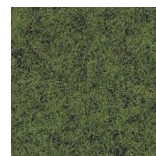
CUZ1E



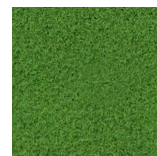
CUZ1F



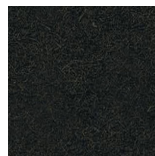
CUZ1J



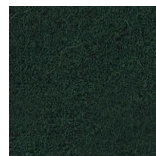
CUZ1K



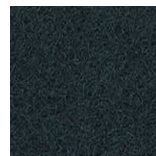
CUZ1L



CUZ1M



CUZ1N



CUZ1P



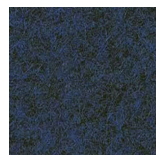
CUZ1R



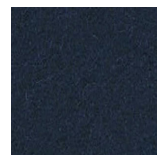
CUZ1T



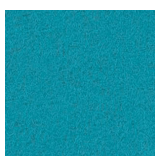
CUZ1V



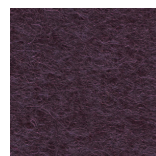
CUZ1W



CUZ1Y



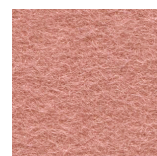
CUZ02



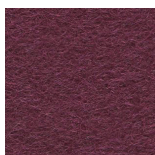
CUZ2



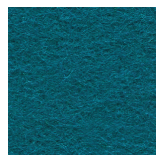
CUZ2Q



CUZ2R



CUZ2S



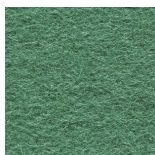
CUZ2U



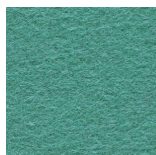
CUZ2W



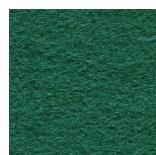
CUZ2X



CUZ2Y



CUZ2Z



CUZ3A

Blazer/Gr.F by Camira

Blazer - Part II



Product information

Blazer is a classic pure new wool upholstery fabric with a billiard cloth felted finish. It is made from premium New Zealand lambswool, where responsible farming provides the highest quality raw material which is soft, clean and bright, which is ideal for spinning, weaving and dyeing. The colour palette is an exciting mix of solids and mélanges across the full colour spectrum, creating a versatile fabric suitable for wide-ranging furniture applications.

Technical information

Industry Application

Workplace, Education
When FR treated: Hospitality & Lesiure

Composition

100% Virgin Wool
Non metallic dyestuffs

Environment

Rapidly renewable and compostable

Width

140 cm minimum

Weight

460 g/m² ±5% (644 g/lin.m ±5%)

Abrasion Resistance*

Heavy duty / 10 year guarantee
Independently certified to ≥ 50,000
Martindale cycles

Flammability

EN 1021 - 1 (cigarette)
EN 1021 - 2 (match)
BS 7176 Low Hazard NF D 60-013
ÖNORM B 3825 & A 3800-1
(58kg/m³ CMHR Foam)
UNI 9175 Classe 1 IM

BS 476 Part 7 Class 1 (Adhered)
EN 13501-1 Adhered Class D, s1, d0

Optional: Please specify when ordering (when FR treated):

BS 5852 Ignition Source 5 BS 7176 Medium Hazard
BS 476 Part 6 Class O
EN 13501-1 Adhered Class B, s1, d0
EN 13501-1 Un-adhered Class D, s2, d0
BS 5867-2: Type B Curtains & Drapes

Light Fastness

5 (ISO 105 - B02)

Fastness to Rubbing

Wet: 4, Dry: 4 (ISO 105 - X12)

Cleaning

Vacuum regularly. Professionally dry clean or wipe clean with a damp cloth.



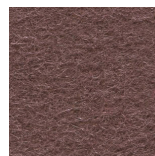
CUZ3B



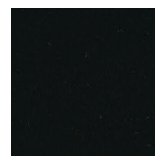
CUZ3C



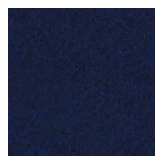
CUZ3D



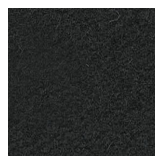
CUZ3E



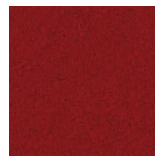
CUZ08



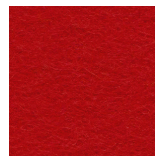
CUZ09



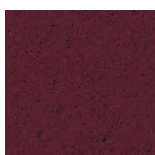
CUZ12



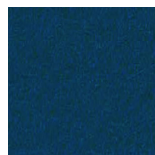
CUZ13



CUZ18



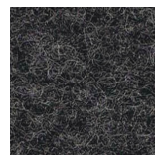
CUZ21



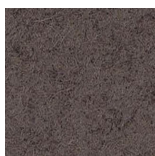
CUZ26



CUZ28



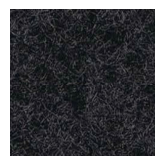
CUZ30



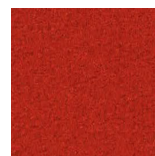
CUZ31



CUZ33



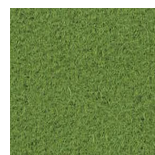
CUZ35



CUZ39



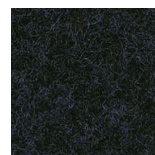
CUZ47



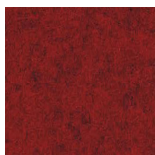
CUZ53



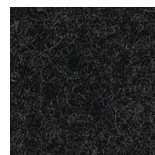
CUZ58



CUZ62



CUZ63



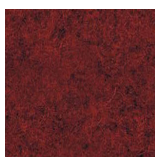
CUZ67



CUZ82



CUZ86



CUZ90

Silk/Gr.G by Camira

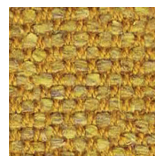
Silk - Product information



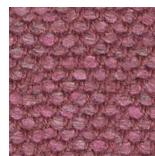
Silk is a beautifully constructed dobby weave fabric created with a three tone tweed effect, rich with rustic charm. Made from a blend of three natural fibres: silk, flax and wool. This product has a fantastic eco-story, a luxuriously soft handle and is inherently flame retardant. The silk element is recycled content derived from 'noils' which are the short fibre waste remnants from the combing process before spinning. The fabric offers a colour palette of muted pastels with brighter highlights



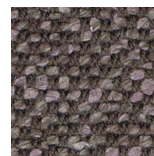
SLK01



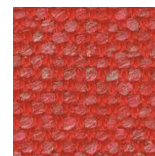
SLK02



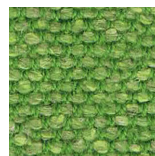
SLK03



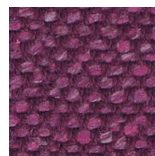
SLK04



SLK05



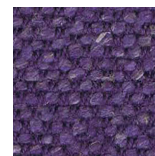
SLK06



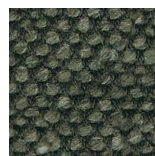
SLK07



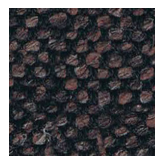
SLK08



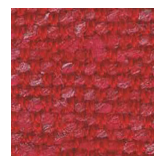
SLK09



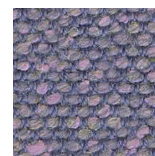
SLK10



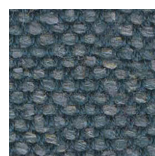
SLK11



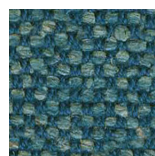
SLK12



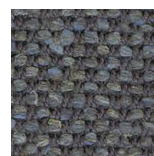
SLK13



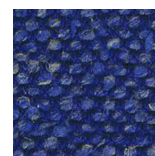
SLK14



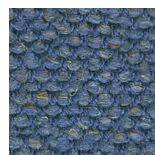
SLK15



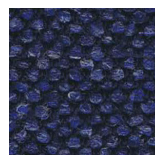
SLK16



SLK17



SLK18



SLK19



SLK20



SLK21

Technical information

Industry Application

Workplace, Education, Hospitality & Leisure

Composition

67% Wool, 22% Flax, 11% Silk

Environment

Certified to Indoor Advantage™ Gold
Rapidly renewable and compostable
Made from wool, bast fibre and recycled silk
Non metallic dyestuffs

Width

140 cm minimum

Weight

495 g/m² ±5% (693 g/lin.m ±5%)

Abrasion Resistance*

Heavy duty / 10 year guarantee
Independently certified to ≥ 50,000
Martindale cycles

Flammability

EN 1021 - 1 (cigarette)
EN 1021 - 2 (match)
BS 7176 Low Hazard
BS 5852 Ignition Source 5
BS 7176 Medium Hazard
UNI 9175 Classe 1 IM
BS 5867-2: Type B Curtains & Drapes

Light Fastness

5 (ISO 105 - B02)

Fastness to Rubbing

Wet: 4, Dry: 4 (ISO 105 - X12)

Cleaning

Vacuum regularly.
Professionally dry clean or wipe clean
with a damp cloth.



INDOOR ADVANTAGE GOLD
FURNITURE



Technical specifications: www.camirafabrics.com

Please be aware that the PDF colour shades can appear different from the real fabric colours. We advise you to request actual fabric samples before ordering.

www.eneadesign.com