

# **Kvadrat by Enea**

[www.kvadrat.dk](http://www.kvadrat.dk)

# Revive/Gr.F by Kvadrat

## Revive - Product information

Revive 1+2 are vibrant upholstery textiles designed by Georgina Wright. Both are made from post-consumer recycled polyester (PET) and are especially created with a focus to reduce the environmental impact both in production and natural resources.

The designs of Revive 1+2 are inspired by the textures, colours and materials of harbours and fishing boats. They each comprise two unicolours, one in the warp and one in the weft. These are either tone-in-tone or slightly contrasting. This ensures the designs complement each other well.

## Technical information

### Revive 1 - 0144

#### Application

Offices, hotels, institutions, domestic use. Great durability.

#### Composition

100% Recycled polyester FR

#### Weight

420 g/lin.m

#### Width

140 cm / 55 inches

#### Abrasion

60,000 rubs martindale (EN ISO 12947)

#### Pilling

4-5 scale 1-5, max. 5 - EN ISO 12945

#### Light fastness

5 scale 1-8, max. 8 - EN ISO 105-B02

#### Rubbing fastness

4-5/5 (wet/dry)

scale 1-5, max. 5 - EN ISO 105x12

#### Care

Please, see the ISO symbols.

60°C shrinkage max. 1%.

#### Flammability

DIN 4102 B1

EN 1021-1/2

IMO FTP Code 2010 Part 8

UNI 9175 1IM

US Cal. Bull. 117-2013

ÖNORM B1/ Q1

NF D 60 013 with treatment

SN 198 898 5.3 with treatment

AS/NZS 3837, class 1

BS 5852 ignition source 3

BS 5852 Crib 5 with treatment

BS 5852 part 1 with treatment

GB 50222 B1 with treatment

UNI 9177 Classe 1

#### Environment

Environmental Product Declaration,

EN15804

Reduced emissions Greenguard and

Greenguard Gold certified



# Field/Gr.G by Kvadrat

## Field - Product information

Designed by Alfredo Häberli, Field 2 is an upholstery textile characterised by intriguing colour combinations and an intricate chequered pattern. Originally inspired by the classic Kvadrat textile Hallingdal 65, it comes in an updated palette that offers 22 new colourways.

## Technical information

### Field 2 - 0123

#### Application

Offices, hotels, institutions, domestic use. Great durability.

#### Composition

100% Trevira CS

#### Weight

450 g/lin.m

#### Width

140 cm / 55 inches

#### Abrasion

100,000 rubs martindale (EN ISO 12947)

#### Pilling

4-5 scale 1-5, max. 5 - EN ISO 12945

#### Light fastness

6-7 scale 1-8, max. 8 - EN ISO 105-B02

#### Rubbing fastness

4-5/4-5 (wet/dry)

scale 1-5, max. 5 - EN ISO 105x12

#### Care

Please, see the ISO symbols.

60°C shrinkage max. 2%.

#### Sound absorption

0.55 en ISO 354/Class D (flat)

0.85 Class B (waved)

Airflow 431 Pa s/m

#### Flammability

BS 5852 Crib 5

BS 5852 part 1, ig. s. 0

DIN 4102 B1

EN 1021-1/2

FAR 25.853

IMO FTP Code 2010 Part 8

NF D 60 013

NF P 92 507 M1

UNI 9175 1IM

UNI 9177 Classe 1

US Cal. Bull. 117-2013

ÖNORM B1/ Q1

SN 198 898 5.2

AS/NZS 3837, class 1

EN 13501, B-s1, d0

#### Environment

Environmental Product Declaration,  
EN15804

Reduced emissions Greenguard and  
Greenguard Gold certified



# Remix/Gr.H

## by Kvadrat Part I

### Remix - Product information

Remix 3 is an elegant upholstery textile distinguished by exceptional depth of colour, designed by Giulio Ridolfo. It comes in 23 new hues, adding to an already expansive palette which now offers a total of 72 sophisticated colourways. Remix 3 looks unicoloured from a distance but reveals subtle details and colour contrasts when viewed close-up. The textile features a tight, minimalistic weave, and derives its lively colour play from a combination of two different mélange yarns, which each combine up to three hues.

### Technical information

#### Remix 3 - 0113

#### Application

Offices, hotels, institutions, domestic use. Great durability.

#### Composition

90% New wool (worsted), 10% Nylon

#### Weight

415 g/lin.m

#### Width

140 cm / 55 inches

#### Abrasion

100,000 rubs martindale (EN ISO 12947)

#### Pilling

3-4 scale 1-5, max. 5 - EN ISO 12945

#### Light fastness

5-7 scale 1-8, max. 8 - EN ISO 105-B02

#### Rubbing fastness

4/4-5 (wet/dry)

scale 1-5, max. 5 - EN ISO 105x12

#### Care

Please, see the ISO symbols.

#### Flammability

AS/NZS 1530.3

AS/NZS 3837, class 2

BS 5852 part 1

EN 1021-1/2

IMO FTP Code 2010 Part 8

NF D 60 013

NFPA 260

UNI 9175 1IM

US Cal. Bull. 117-2013

ÖNORM B1/ Q1

BS 5852 Crib 5 with treatment

IMO FTP Code 2010 Part 7 with

SN 198 898 5.3 with treatment

BS 5852 ignition source 3

GB 50222 B1 with treatment

#### Environment

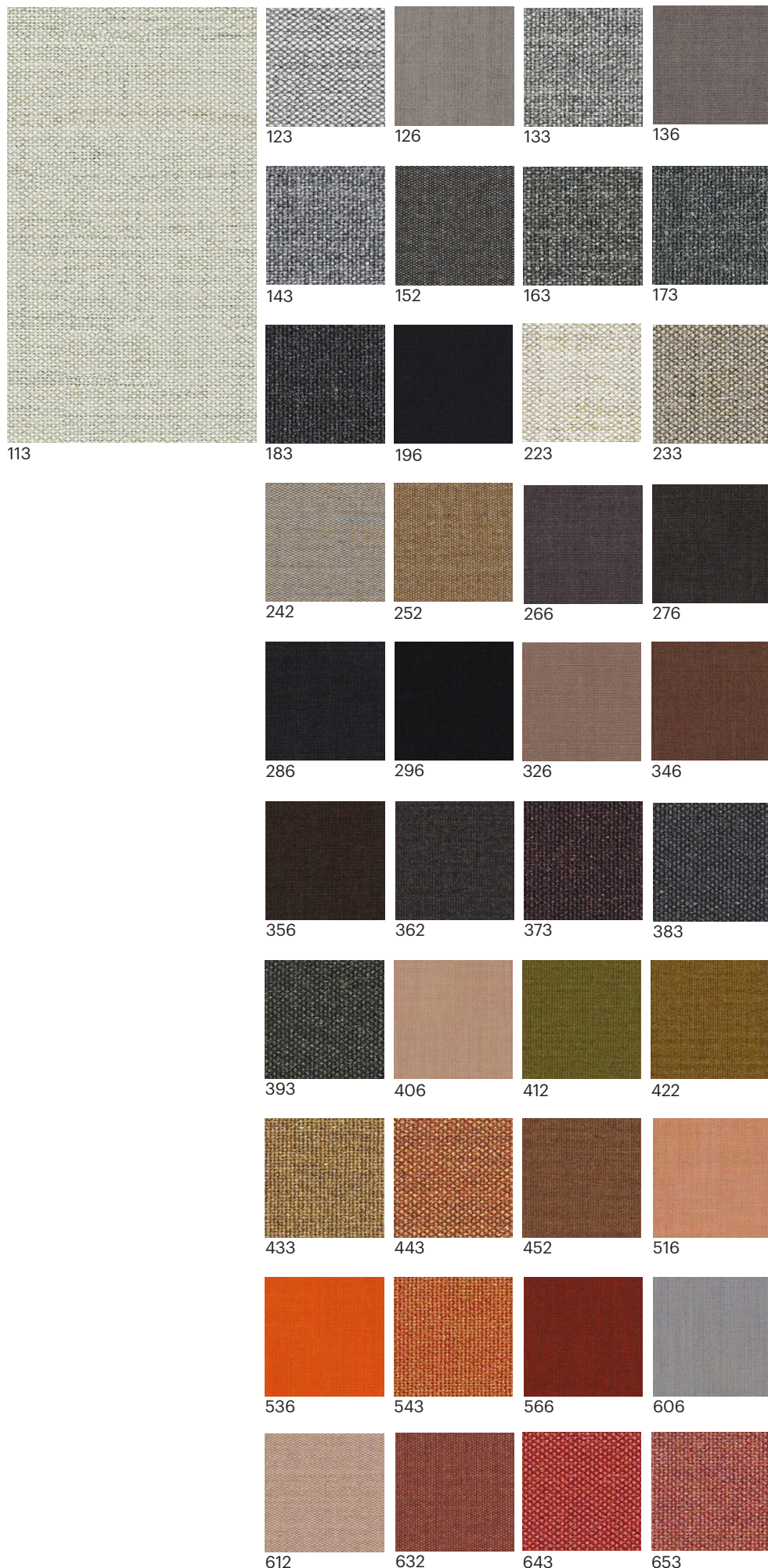
EU Ecolabel Certificate

Environmental Product Declaration,

EN15804

Reduced emissions Greenguard and

Greenguard Gold certified



# Remix/Gr.H

## by Kvadrat Part II

### Remix - Product information

Remix 3 is an elegant upholstery textile distinguished by exceptional depth of colour, designed by Giulio Ridolfo. It comes in 23 new hues, adding to an already expansive palette which now offers a total of 72 sophisticated colourways. Remix 3 looks unicoloured from a distance but reveals subtle details and colour contrasts when viewed close-up. The textile features a tight, minimalistic weave, and derives its lively colour play from a combination of two different mélangé yarns, which each combine up to three hues.

### Technical information

#### Remix 3 - 0113

#### Application

Offices, hotels, institutions, domestic use. Great durability.

#### Composition

90% New wool (worsted), 10% Nylon

#### Weight

415 g/lin.m

#### Width

140 cm / 55 inches

#### Abrasion

100,000 rubs martindale (EN ISO 12947)

#### Pilling

3-4 scale 1-5, max. 5 - EN ISO 12945

#### Light fastness

5-7 scale 1-8, max. 8 - EN ISO 105-B02

#### Rubbing fastness

4/4-5 (wet/dry)

scale 1-5, max. 5 - EN ISO 105x12

#### Care

Please, see the ISO symbols.

#### Flammability

AS/NZS 1530.3

AS/NZS 3837, class 2

BS 5852 part 1

EN 1021-1/2

IMO FTP Code 2010 Part 8

NF D 60 013

NFPA 260

UNI 9175 1IM

US Cal. Bull. 117-2013

ÖNORM B1/ Q1

BS 5852 Crib 5 with treatment

IMO FTP Code 2010 Part 7 with

SN 198 898 5.3 with treatment

BS 5852 ignition source 3

GB 50222 B1 with treatment

#### Environment

EU Ecolabel Certificate

Environmental Product Declaration,

EN15804

Reduced emissions Greenguard and

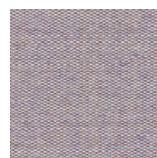
Greenguard Gold certified



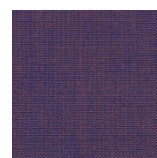
662



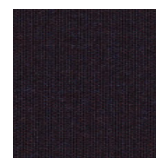
672



682



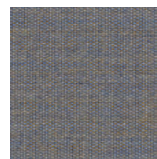
686



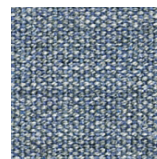
692



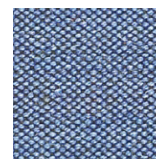
716



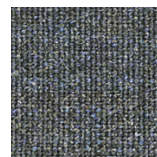
722



733



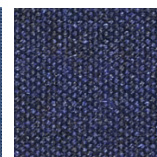
743



753



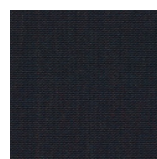
762



773



783



796



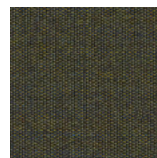
816



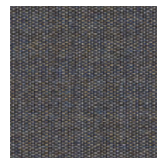
823



836



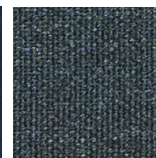
842



852



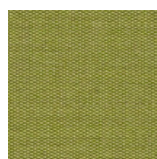
866



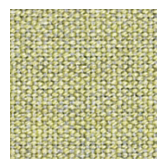
873



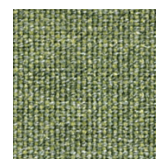
906



912



923



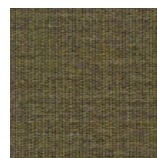
933



942



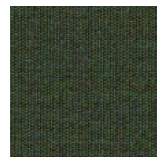
954



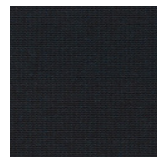
962



973



982



996

# Clara/Gr.H by Kvadrat

## Clara - Product information

Clara is available in twelve sets of reverse colourways. One version is unicoloured and interwoven with melange stitching, while the other is with unicolour stitching on a melange background. The melange yarns add depth to the look of Clara and combine to vibrant effect with the unicolour yarns. The fabric, which changes appearance according to the position of the viewer, projects a strong sense of volume and richness.

## Technical information

### Clara 2 - 0647

#### Application

Offices, hotels, institutions, domestic use. Great durability.

#### Composition

92% New wool (worsted), 8% Nylon

#### Weight

400 g/lin.m

#### Width

138 cm / 54 inches

#### Abrasion

80,000 rubs martindale (EN ISO 12947)

#### Pilling

4 scale 1-5, max. 5 - EN ISO 12945

#### Light fastness

5-7 scale 1-8, max. 8 - EN ISO 105-B02

#### Rubbing fastness

4/4-5 (wet/dry)

scale 1-5, max. 5 - EN ISO 105x12

#### Care

Please, see the ISO symbols.

#### Flammability

AS/NZS 3837

BS 5852 part 1

EN 1021-1/2

IMO FTP Code 2010 Part 8

NF D 60 013

NFPA 260

UNI 9175 1IM

US Cal. Bull. 117-2013

ÖNORM B1/ Q1

BS 5852 Crib 5 with treatment

#### Environment

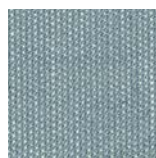
EU Ecolabel Certificate

Environmental Product Declaration,  
EN15804

Reduced emissions Greenguard and  
Greenguard Gold certified



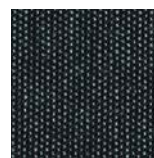
144



148



184



188



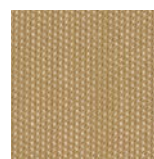
244



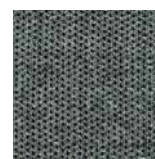
248



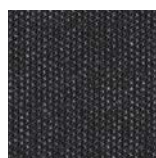
273



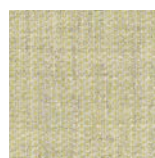
277



384



388



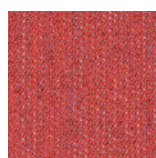
423



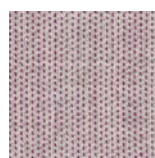
427



544



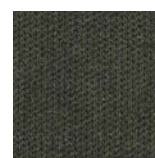
548



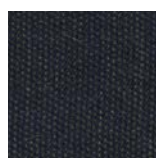
643



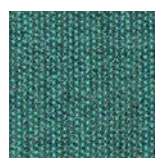
647



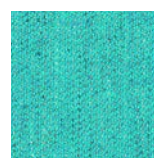
793



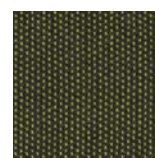
797



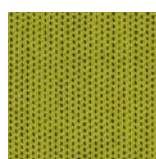
884



888



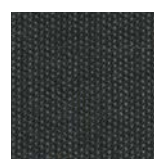
933



937



983



987

# Steelcut Trio/Gr.I by Kvadrat

## Steelcut T.- Product information

Steelcut Trio is a hardwearing woollen upholstery textile with the same construction as Steelcut. Originally designed by Frans Dijkmeijer, it comes in updated colourways crafted by Giulio Ridolfo. The three-dimensional surface of Steelcut Trio resembles small pyramids or steel points. Despite the complexity of the textile's innovative weave, it has a simple, precise expression. Steelcut Trio is yarn-dyed and made from 3 differently coloured yarns.

## Technical information

### Steelcut Trio 3 - 0746

#### Application

Offices, hotels, institutions, domestic use. Great durability.

#### Composition

90% New wool (worsted), 10% Nylon

#### Weight

770 g/lin.m

#### Width

140 cm

#### Abrasion

100,000 rubs martindale (EN ISO 12947)

#### Pilling

4 scale 1-5, max. 5 - EN ISO 12945

#### Light fastness

5-7 scale 1-8, max. 8 - EN ISO 105-B02

#### Rubbing fastness

3-5/4-5 (wet/dry)

scale 1-5, max. 5 - EN ISO 105x12

#### Care

Please, see the ISO symbols.

#### Flammability

AS/NZS 3837, class 2

BS 5852 part 1

EN 1021-1/2

IMO FTP Code 2010 Part 8

NF D 60 013

NFPA 260

SN 198 898 5.3 with treatment

UNI 9175 1IM

US Cal. Bull. 117-2013

ÖNORM B1/ Q1

BS 5852 Crib 5 with treatment

AS/NZS 1530.3

BS 5852 ignition source 3

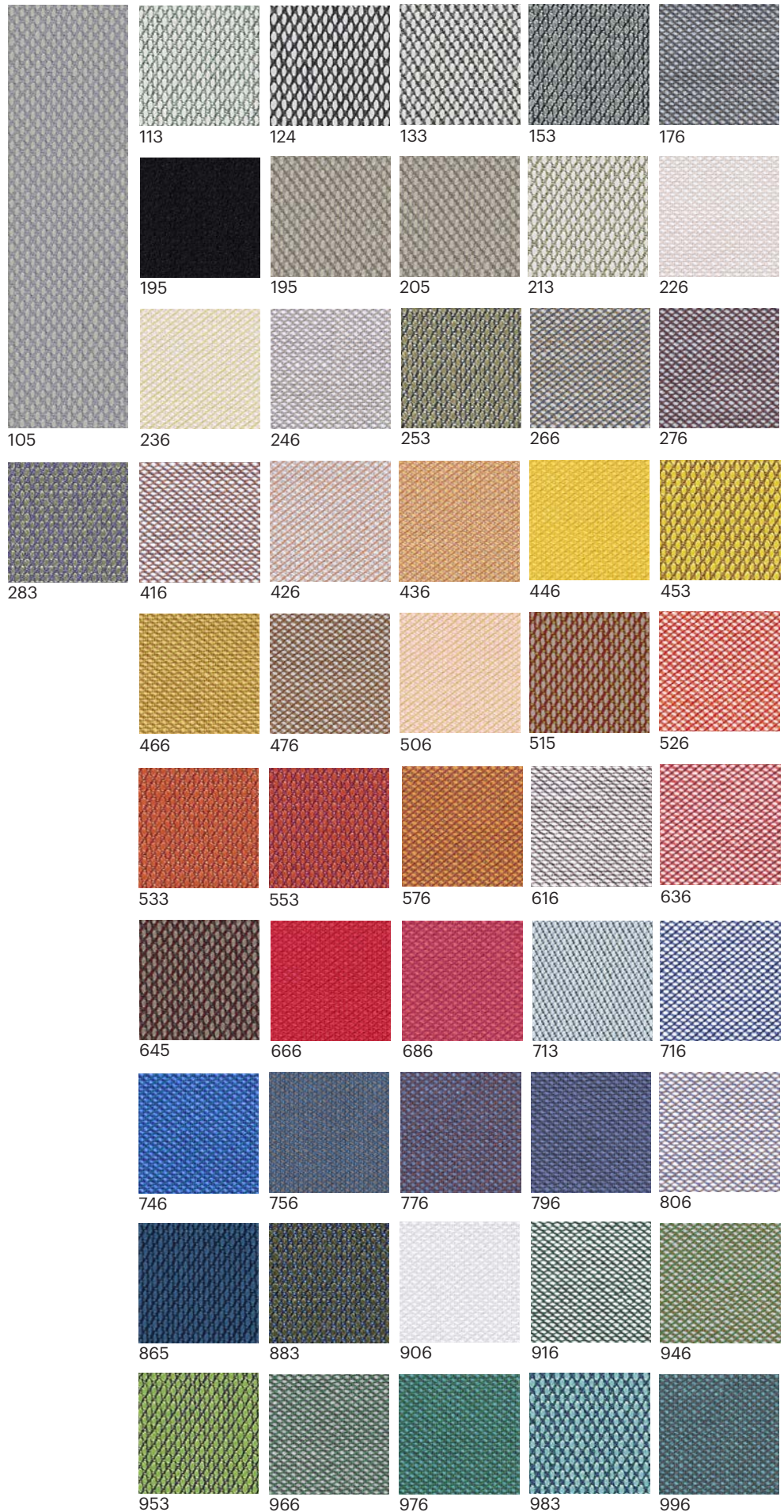
GB 50222 B1 with treatment

#### Environment

EU Ecolabel Certificate

Environmental Product Declaration,  
EN15804

Reduced emissions Greenguard and  
Greenguard Gold certified



# Hallingdal/Gr.I by Kvadrat

## Hallingdal - Product information

Kvadrat's first textile 'Hallingdal' has become the archetype of woollen textiles. The very durable upholstery fabric was originally designed in 1965 by Nanna Ditzel, and is now available in a version with an updated colour scale: Hallingdal 65.

Hallingdal 65 is made of wool and viscose, which complement each other well: the wool provides excellent durability and flexibility, whilst the viscose adds brilliance and depth to the colour. Both materials are dyed before they are spun, which highlights the rich texture of the fabric.

## Technical information

### Hallingdal 65 - 0733

#### Application

Offices, hotels, institutions, domestic use. Great durability.

#### Composition

70% New wool, 30% Viscose

#### Weight

795 g/lin.m

#### Width

130 cm

#### Abrasion

100,000 rubs martindale (EN ISO 12947)

#### Pilling

3-4 scale 1-5, max. 5 - EN ISO 12945

#### Light fastness

5-7 scale 1-8, max. 8 - EN ISO 105-B02

#### Rubbing fastness

3-5/4-5 (wet/dry)

scale 1-5, max. 5 - EN ISO 105x12

#### Care

Please, see the ISO symbols.

#### Flammability

AS/NZS 1530.3

BS 5852 Crib 5

BS 5852 part 1

EN 1021-1/2

IMO FTP Code 2010 Part 8

NF D 60 013

NFPA 260

UNI 9175 1IM

US Cal. Bull. 117-2013

ÖNORM B1/ Q1

BS 5852 ignition source 3

GB 50222 B1 with treatment (ch

AS/NZS 3837, class 2

SN 198 898 5.2 with treatment

#### Environment

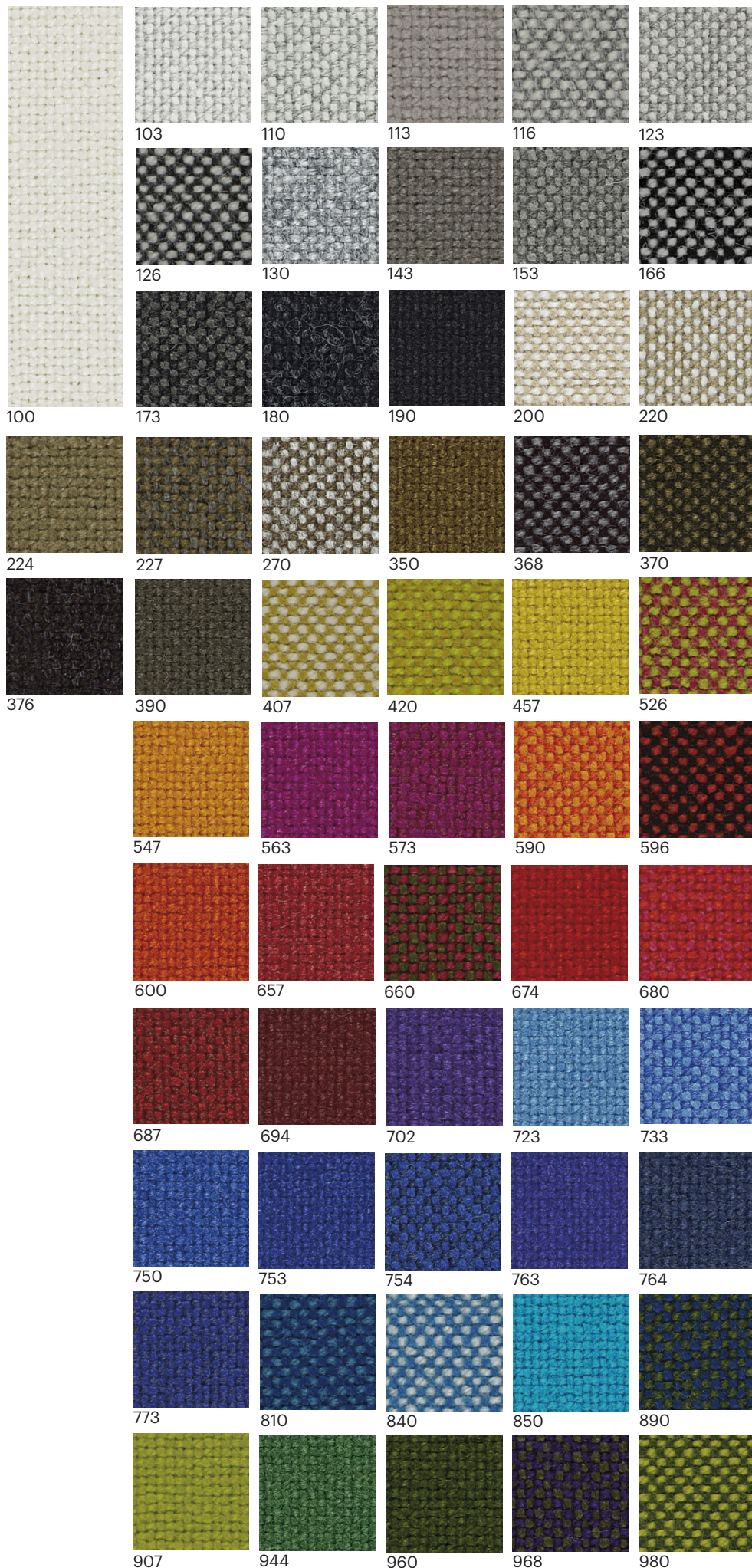
EU Ecolabel Certificate

Environmental Product Declaration,

EN15804

Reduced emissions Greenguard and

Greenguard Gold certified





# Canvas/Gr.I by Kvadrat

## Canvas - Product information

Canvas is a vibrant woollen upholstery textile created by Giulio Ridolfo. Particularly well-suited to large surfaces thanks to its pronounced structure, it features a soft weave and an expanded palette inspired by the landscapes of Skagen, Denmark.

The melange yarn used to craft Canvas combines three colours, with six hues in every colourway. Consequently, the textile offers exceptional colour richness and an intriguing expression. From a distance, it has the calm surface of a unicoloured textile. But, get closer, and shimmering colour nuances, delicate contrasts and an elegant structure emerge.

## Technical information

### Canvas 2 - 0356

#### Application

Offices, hotels, institutions, domestic use. Great durability.

#### Composition

90% New wool (worsted), 10% Nylon

#### Weight

480 g/lin.m

#### Width

140 cm / 55 inches

#### Abrasion

100,000 rubs martindale (EN ISO 12947)

#### Pilling

4 scale 1-5, max. 5 - EN ISO 12945

#### Light fastness

5-7 scale 1-8, max. 8 - EN ISO 105-B02

#### Rubbing fastness

4/4-5 (wet/dry)

scale 1-5, max. 5 - EN ISO 105x12

#### Care

Please, see the ISO symbols.

#### Flammability

AS/NZS 1530.3

BS 5852 part 1

EN 1021-1/2

IMO FTP Code 2010 Part 8

NF D 60 013

NFPA 260

SN 198 898 5.3 with treatment

UNI 9175 1IM

US Cal. Bull. 117-2013

ÖNORM B1/ Q1

BS 5852 ignition source 3

BS 5852 Crib 5 with treatment

GB 50222 B1 with treatment

#### Environment

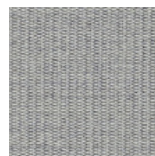
EU Ecolabel Certificate

Environmental Product Declaration,  
EN15804

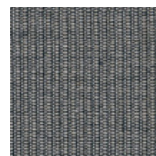
Reduced emissions Greenguard and  
Greenguard Gold certified



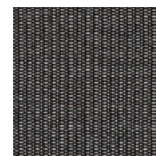
114



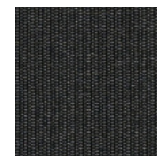
124



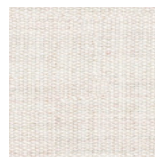
134



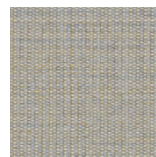
154



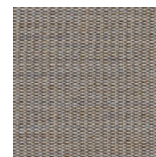
174



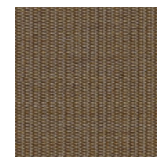
216



224



244



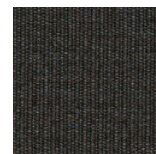
254



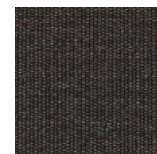
264



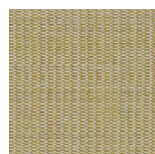
356



364



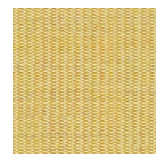
374



414



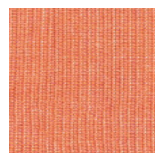
424



446



454



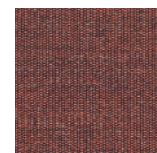
546



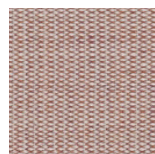
556



566



576



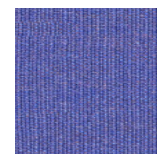
614



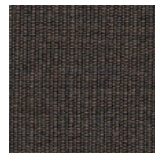
644



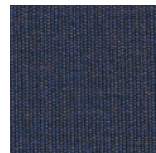
654



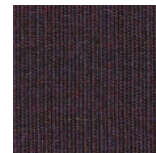
666



674



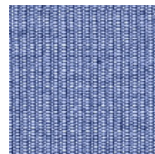
684



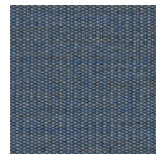
694



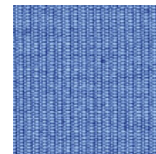
716



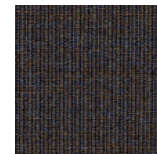
726



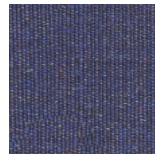
734



746



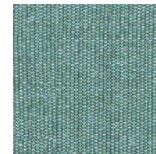
764



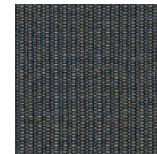
786



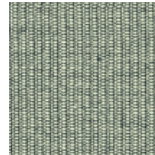
794



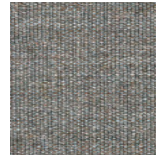
836



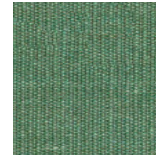
854



926



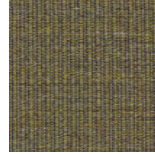
936



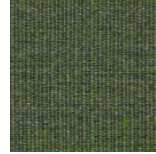
946



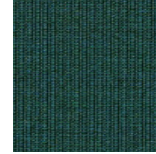
954



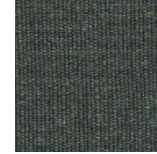
964



974



984



996

# Re-wool/Gr.I by Kvadrat

## Re-wool- Product information

Crafted using 45% recycled wool, Re-wool is a rich upholstery textile with a sustainable profile. The textile is partly made by reusing scraps from Kvadrat's yarn spinners in the UK. It is designed by Margrethe Odgaard.

The idea was to create a both honest and environmentally friendly – textile with a poetic feel by recycling leftover material from Kvadrat's own production', explains Margrethe Odgaard. Reminiscent of colourful stitchings on a darker background, Re-wool features exceptional depth of colour, creating a dynamic play on the textile's surface when applied to furniture.

## Technical information

### Re-wool - 0218

#### Application

Offices, hotels, institutions, domestic use. Great durability.

#### Composition

45% New wool (worsted), 45% Recycled wool, 10% Nylon

#### Weight

540 g/lin.m

#### Width

140 cm / 55 inches

#### Abrasion

100,000 rubs martindale (EN ISO 12947)

#### Pilling

4 scale 1-5, max. 5 - EN ISO 12945

#### Light fastness

5-7 scale 1-8, max. 8 - EN ISO 105-B02

#### Rubbing fastness

4/4-5 (wet/dry)

scale 1-5, max. 5 - EN ISO 105x12

#### Care

Please, see the ISO symbols.

#### Flammability

BS 5852 Crib 5 with treatment

BS 5852 ignition source 3

BS 5852 part 1

EN 1021-1/2

IMO FTP Code 2010 Part 8

NF D 60 013

UNI 9175 1IM

US Cal. Bull. 117-2013

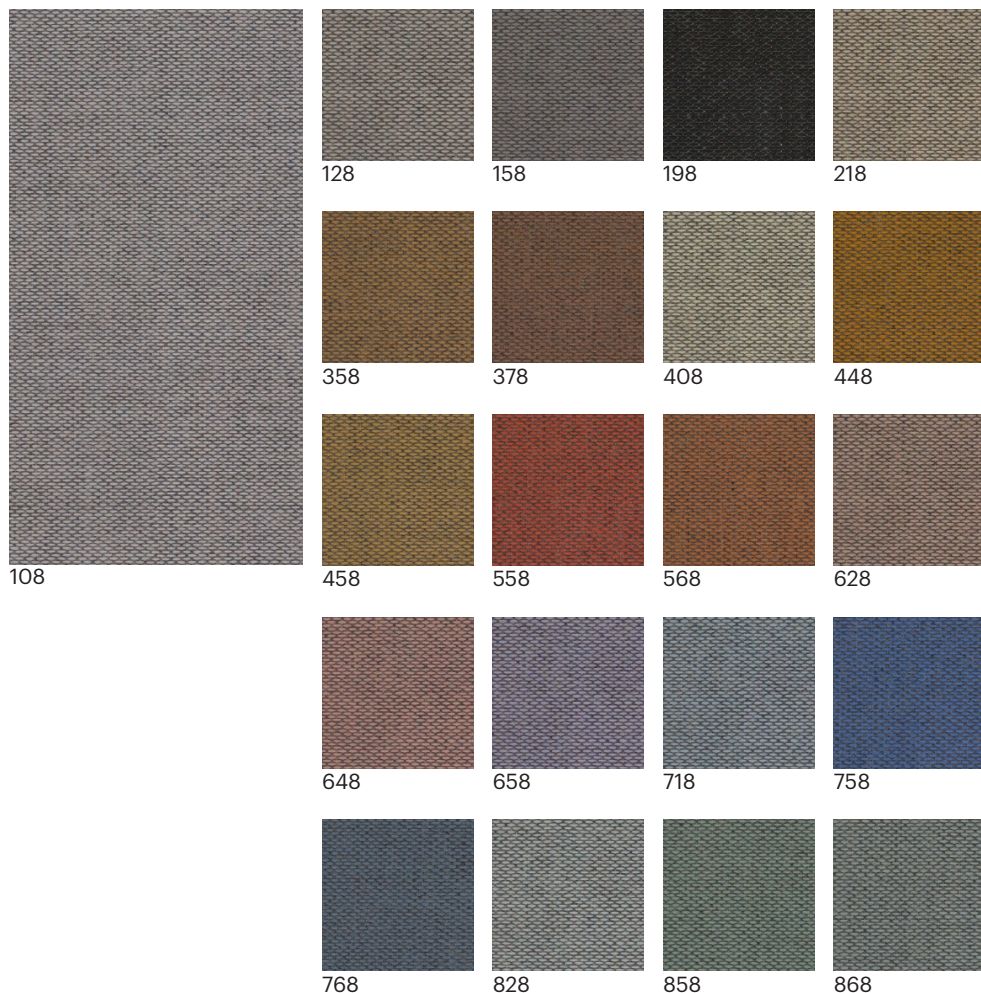
ÖNORM B1/ Q1

AS/NZS 3837, class 2

#### Environment

EU Ecolabel Certificate

Reduced emissions Greenguard Gold certified



# Tonus/Gr.I by Kvadrat

## Tonus - Product information

Tonus 4 is a colour update of Tonus, an elastic upholstery fabric by late textile artist Nina Koppel. Ideal for modern organic furniture and characterised by rare colour richness, it comes in a total of 47 hues, of which 19 are new.

Now recognised as a classic textile, Tonus brings colours to life in vibrant, precise fashion. Building on this characteristic, the intensity and brightness of all the colours have been increased.

## Technical information

### Tonus 4 - 0914

#### Application

Offices, hotels, institutions, domestic use. Great durability and stretchability.

#### Composition

90% New wool, 10% Helanca

#### Weight

665 g/lin.m

#### Width

140 cm / 55 inches

#### Abrasion

100,000 rubs martindale (EN ISO 12947)

#### Pilling

3 scale 1-5, max. 5 - EN ISO 12945

#### Light fastness

5-7 scale 1-8, max. 8 - EN ISO 105-B02

#### Rubbing fastness

3-5/3-5 (wet/dry)

scale 1-5, max. 5 - EN ISO 105x12

#### Care

Please, see the ISO symbols.

#### Flammability

BS 5852 part 1

EN 1021-1/2

IMO FTP Code 2010 Part 8

NF D 60 013

NFPA 260

SN 198 898 5.3 with treatment

UNI 9175 1IM

US Cal. Bull. 117-2013

ÖNORM B1/ Q1

BS 5852 Crib 5 with treatment

#### Environment

EU Ecolabel Certificate

Environmental Product Declaration,  
EN15804

Reduced emissions Greenguard and  
Greenguard Gold certified



# Divina/Gr.I by Kvadrat

## Divina - Product information

Divina is a full-cloth product, which means that it is manufactured by weaving the yarn in a coarse linen hose casing, after which, it is subjected to mechanical processing using very high temperatures, at the same time as it is being coloured. This creates a situation where the surface becomes smooth, directionless and uniform in a manner very similar to the properties of felt.

## Technical information

Divina 3 - 0876

### Application

Offices, hotels, institutions, domestic use.

### Composition

100% New wool

### Weight

840 g/lin.m

### Width

150 cm / 59 inches

### Abrasion

45,000 rubs martindale (EN ISO 12947)

### Pilling

3 scale 1-5, max. 5 - EN ISO 12945

### Light fastness

5-7 scale 1-8, max. 8 - EN ISO 105-B02

### Rubbing fastness

4/4-5 (wet/dry)

scale 1-5, max. 5 - EN ISO 105x12

### Care

Please, see the ISO symbols.  
Iron withouts steam.

### Flammability

AS/NZS 1530.3

BS 5852 Crib 5

BS 5852 part 1

BS 5867 part 2 type B

EN 1021-1/2

EN 13501, C-s1, d0, glued

IMO FTP Code 2010 Part 8

NF D 60 013

NFPA 260

SN 198 898 5.3 with treatment

UNI 9175 1IM

US Cal. Bull. 117-2013

ÖNORM B1/ Q1

BS 5852 ignition source 3

GB 50222 B1 with treatment

### Environment

EU Ecolabel Certificate

Environmental Product Declaration,

EN15804

Reduced emissions Greenguard and

Greenguard Gold certified



# MD/Gr.I by Kvadrat

## MD - Product information

Divina MD is an upholstery textile designed by Finn Sködt. Available in sophisticated, rich colours, which reveal hidden depths as the perspective of the viewer changes, it makes a strong colour statement. In addition, thanks to its smooth, directionless and consistent surface, it complements the shape of furniture very well and is ideal for organically shaped furniture.

Divina MD's full-bodied and subtle structure is ideal for bringing an extensive range of tones to life. Its colourways, which are all crafted from a blend of different tones, appear unicoloured from a distance, but reveal different colour nuances under closer examination.

## Technical information

### Divina MD - 0433

#### Application

Offices, hotels, institutions, domestic use.

#### Composition

100% New wool

#### Weight

840 g/lin.m

#### Width

150 cm / 59 inches

#### Abrasion

45,000 rubs martindale (EN ISO 12947)

#### Pilling

3 scale 1-5, max. 5 - EN ISO 12945

#### Light fastness

5-6 scale 1-8, max. 8 - EN ISO 105-B02

#### Rubbing fastness

4/4-5 (wet/dry)

scale 1-5, max. 5 - EN ISO 105x12

#### Care

Please, see the ISO symbols.

Iron withouts steam.

#### Flammability

AS/NZS 1530.3

BS 5852 Crib 5

BS 5852 part 1

BS 5867 part 2 type B

EN 1021-1/2

EN 13501, C-s1, d0, glued

IMO FTP Code 2010 Part 8

NF D 60 013

NFPA 260

SN 198 898 5.3 with treatment

UNI 9175 1IM

US Cal. Bull. 117-2013

ÖNORM B1/ Q1

BS 5852 ignition source 3

GB 50222 B1 with treatment

#### Environment

EU Ecolabel Certificate

Environmental Product Declaration,

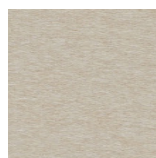
EN15804

Reduced emissions Greenguard and

Greenguard Gold certified



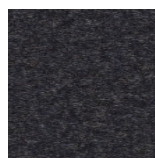
193



203



213



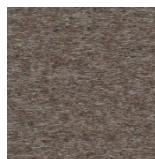
293



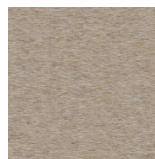
343



353



363



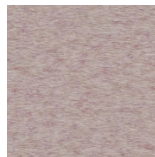
413



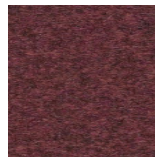
433



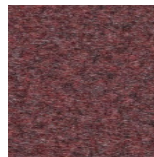
453



613



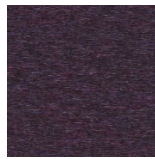
633



653



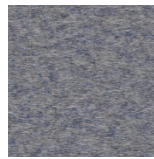
673



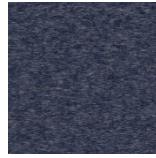
683



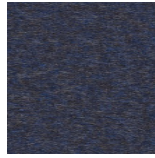
713



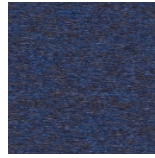
733



743



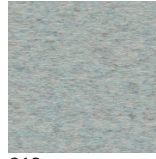
753



773



783



813



843



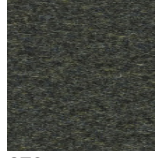
873



913



943



973

**enea**  
www.eneadesign.com

# Divina Melange/ Gr.I by Kvadrat

## D.Melange - Product information

### Technical information

Divina Melange 3 - 0597

#### Application

Offices, hotels, institutions, domestic use.

#### Composition

100% New wool

#### Weight

840 g/lin.m

#### Width

150 cm / 59 inches

#### Abrasion

45,000 rubs martindale (EN ISO 12947)

#### Pilling

3 scale 1-5, max. 5 - EN ISO 12945

#### Light fastness

5-7 scale 1-8, max. 8 - EN ISO 105-B02

#### Rubbing fastness

4/4-5 (wet/dry)

scale 1-5, max. 5 - EN ISO 105x12

#### Care

Please, see the ISO symbols.  
Iron withouts steam.

#### Flammability

AS/NZS 1530.3

BS 5852 Crib 5

BS 5852 part 1

BS 5867 part 2 type B

EN 1021-1/2

EN 13501, C-s1, d0, glued

IMO FTP Code 2010 Part 8

NF D 60 013

NFPA 260

SN 198 898 5.3 with treatment

UNI 9175 1IM

US Cal. Bull. 117-2013

ÖNORM B1/ Q1

BS 5852 ignition source 3

GB 50222 B1 with treatment

#### Environment

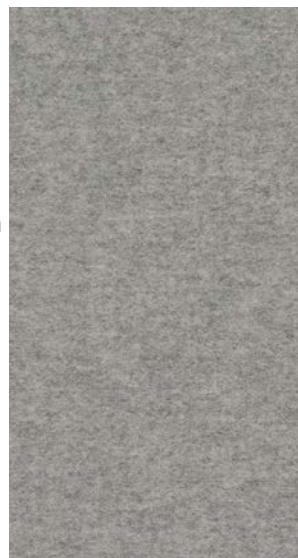
EU Ecolabel Certificate

Environmental Product Declaration,

EN15804

Reduced emissions Greenguard and

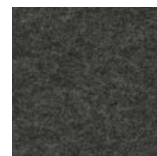
Greenguard Gold certified



120



147



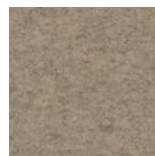
170



180



227



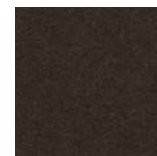
237



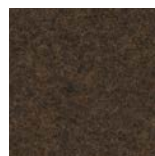
260



277



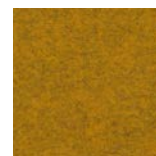
280



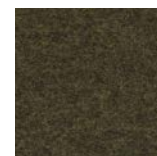
367



427



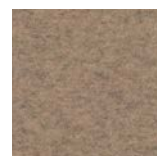
457



467



471



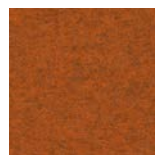
517



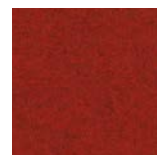
521



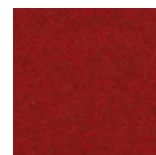
527



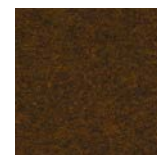
547



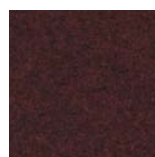
557



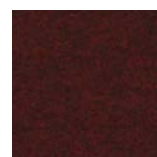
567



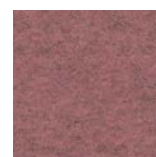
571



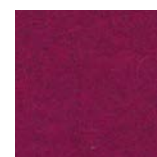
581



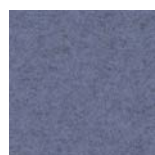
597



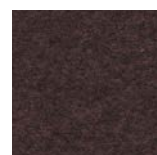
617



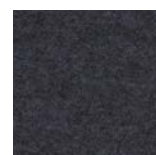
620



647



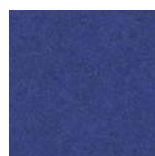
677



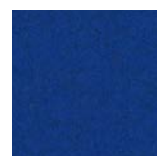
687



731



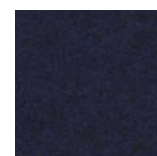
747



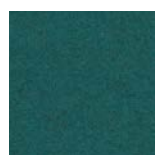
757



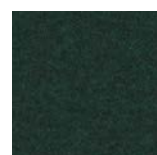
777



787



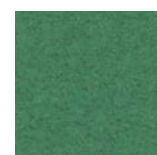
821



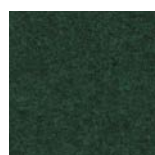
871



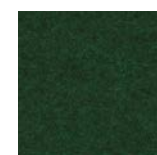
917



937



967



977

[www.eneadesign.com](http://www.eneadesign.com)